

Memorial Medical Staff Members



Adams, Daniel E., MD, Radiology

SMB Radiology
14231 Seaway Road Suite 5003
Gulfport, MS 39503
Tel: 864-4392
Fax: 868-7103



Adams, David N., MD, Physical Medicine & Rehabilitation

5709 Shoreline Dr.
Shreveport, LA 71119
Tel: (318) 347-0768



Adams, Stephen J., DO, Radiology

Virtual Radiologic Professionals, LLC
11995 Singletree Ln., Suite 500
Eden Prairie, MN 55344
Tel: (952) 392-1100
Fax: (952) 935-2757



Adlakha, Satjit, DO, Cardiology

Memorial Gulf Coast Heart Institute
3111 Shortcut Road
Pascagoula, MS 39567
Tel: (228) 205-3496
Fax: (228) 205-4315



Admire, Beau D., MD, Emergency Medicine

Memorial Hospital Biloxi
150 Reynoir Street
Biloxi, MS 39530
Tel: (228) 432-1571



Akers, Jared, DMD, Oral & Maxillofacial Surgery

South MS Oral Surgery and Implant Center, PLLC
12231 Bernard Pkwy
Gulfport, MS 39503-5086
Tel: (601) 264-7611
Fax: (601) 268-0693



Akula, Kole P., MD, Urology

Memorial Hospital Biloxi
150 Reynoir Street
Tel: (228) 432-1571
Fax: (228) 432-1195

Memorial Medical Staff Members



Al Omary, Mohammad W., MD, Pediatrics

University of Mississippi Medical Center
Department of Pediatrics
2500 North State Street
Jackson, MS 39216
Tel: (601) 984-5200
Fax: (601) 984-5283



Albrektson, Joshua R., MD, Teleradiology

Virtual Radiologic Professionals, LLC
11995 Singletree Ln, Suite 500
Eden Prairie, MN 55344
Tel: (952) 392-1100
Fax: (952) 935-2757



Alexander, Belinda B., MD, Internal Medicine

Memorial Pass Road Internal Medicine Clinic
2771 Pass Rd, Suite A
Biloxi, MS 39531
Tel: (228) 822-6590
Fax: (228) 385-4695



Allen, Summer, MD, Pulmonary Disease

Memorial Pulmonary Clinic
1340 Broad Avenue, Suite 410
Gulfport, MS 39501
Tel: (228) 575-1775
Fax: (228) 575-1770



Allman, Russell E., MD, Radiology

SMB Radiology
14231 Seaway Road Suite 5003
Gulfport, MS 39503
Tel: (228) 864-4392
Fax: (228) 868-7103



Alpaugh, Edward S., MD, Anesthesiology

Memorial Hospital (Anesthesiology)
4500 Thirteenth St.
Gulfport, MS 39501
Tel: (228) 865-3281
Fax: (228) 867-5117



Anand, Neil, MD, Radiology

Virtual Radiologic Professionals, LLC
11995 Singletree Ln., Suite 500
Eden Prairie, MN 55344
Tel: (952) 392-1100
Fax: (952) 935-2757

Memorial Medical Staff Members



Anderson, Eric M., MD, Radiation Oncology

Memorial Radiation Oncology Services
1340 Broad Avenue, Suite 140
Gulfport, MS 39501
Tel: (228) 575-2950
Fax: (228) 867-4828



Antaki, George, MD, Radiology

SMB Radiology
14231 Seaway Road, Suite 5003
Gulfport, MS 39503
Tel: (228) 864-4392
Fax: (228) 868-7103



Anthony, Brian T., MD, General Surgery

Memorial General Surgery-Bay St. Louis
833 Highway 90, Suite 1
Bay St. Louis, MS 39520
Tel: (228) 575-2920
Fax: (228) 466-4677



Aure, Rhoda Lyn S., MD, Nephrology

Memorial South Mississippi Nephrology
4300 B West Railroad Street
Gulfport, MS 39501
Tel: (228) 863-7393
Fax: (228) 868-6643



Awaad, Mohammed I., MD, Cardiology

South Mississippi Heart & Vascular Institute
1104 Broad Avenue
Gulfport, MS 39501
Tel: (228) 864-5570
Fax: (228) 864-5569



Awan, Ghulam M., Interventional Cardiology

Gulf Coast Vascular Care
14219 Cook Rd
Biloxi, MS 39532
Tel: (228) 207-0810
Fax: (228) 333-0440



Aysenne, Aimee M., Neurology

Tulane Center for Clinical Neurosciences
131 S. Robertson St., Ste 1300
New Orleans, LA 70112
Tel: (504) 988-5565
Fax: (504) 988-5793

Memorial Medical Staff Members



Azar, Nabil J., MD, Internal Medicine
Memorial Hospital Gulfport (Hospitalist)
4500 13th Street
Gulfport, MS 39501
Tel: (228) 867-4396
Fax: (228) 867-5354



Badve, Seema, MD, Internal Medicine
Memorial Physician Clinics
3434 Bienville Blvd
Ocean Springs, MS 39564
Tel: (228) 875-1599
Fax: (228) 875-1124



Bahadur, Rainna P., MD, Ophthalmology
Eye Associates of the South
1720-A Medical Park Dr Suite 330A
Biloxi, MS 39532
Tel: (228) 396-5185
Fax: (228) 396-5186



Bailey, Kizzy E., MD, Emergency Medicine
Memorial Hospital Gulfport (Emergency)
4500 13th Street
Gulfport, MS 39501
Tel: (228) 575-2000
Fax: (228) 867-4124



Ballew, Matthew, DO, Hospitalist
Memorial Hospital Gulfport (Hospitalist)
4500 13th Street
Gulfport, MS 39501
Tel: (228) 867-4396
Fax: (228) 867-5354



Banahan, John A., MD, Radiology
Memorial Hospital Gulfport (Radiology)
4500 13th Street
Gulfport, MS 39501
Tel: (228) 865-3617
Fax: (228) 867-4137



Baranano, Anne E., MD, Ophthalmology
Retina Specialty Institute
2781 C T Switzer Sr Dr., Suite 100
Biloxi, MS 39531
Tel: (228) 207-8632
Fax: (228) 207-1157

Memorial Medical Staff Members



Barker, Andrea K., MD, Vascular Surgery

Memorial Vascular Surgery Consultants
1340 Broad Avenue., Suite 220
Gulfport, MS 39501
Tel: (228) 575-1300
Fax: (228) 867-6423



Barnes, Phillip L., DO, Family Medicine

Dr. Phillip Barnes, DO
201 Lameuse Street
Biloxi, MS 39530
Tel: (228) 374-7888



Baroudi, Bassam R., MD, Cardiology

Memorial Coast Heart Institute
4215 15th Street
Gulfport, MS 39501
Tel: (228) 863-5211
Fax: (228) 863-4101
(228) 214-1016



Bartel, Melissa M., MD, Radiology

Virtual Radiologic Professionals, LLC
11995 Singletree Ln, Suite 500
Eden Prairie, MN 55344
Tel: (952) 392-1100
Fax: (952) 935-2757



Batten, Dean, MD, Radiology

Virtual Radiologic Professionals, LLC
11995 Singletree Ln, Suite 500
Eden Prairie, MN 55344
Tel: (952) 392-1100
Fax: (952) 935-2757



Beeson, Donn K., MD, Radiology

Virtual Radiologic Professionals, LLC
11995 Singletree Ln, Suite 500
Eden Prairie, MN 55344
Tel: (952) 392-1100
Fax: (952) 935-2757



Begum, Mubeena, MD, Internal Medicine

44th Avenue Internal Medicine
1404 44th Avenue
Gulfport, MS 39501
Tel: (228) 822-6067
Fax: (228) 822-6737

Memorial Medical Staff Members



Benefield, Boyd P., MD, Internal Medicine
Memorial Orange Grove Medical Specialties
15286 Community Road
Gulfport, MS 39503
Tel: (228) 822-6022
Fax: (228) 832-5195



Benefield, Donald W., MD, Ophthalmology
Benefield Eye Care
14225 Dedeaux Road
Gulfport, MS 39503
Tel: (228) 328-0972
Fax: (228) 328-0975



Bertrand, Jeremy M., DO, OB/GYN
Mississippi Coast OB/GYN
21 Doctor's Drive
Ocean Springs, MS 39564
Tel: (228) 872-1505
Fax: (228) 872-8575



Bertucci, Philip L., MD, Ophthalmology
Phillip Bertucci, MD
15122 Dedeaux Rd
Gulfport, MS 39503
Tel: (228) 832-1242
Fax: (228) 206-6248



Bethala, Cyril V., MD, Cardiology
Memorial Physician Clinics Coast Cardiology Center
4507 15th Street
Gulfport, MS 39501
Tel: (228) 575-1834
Fax: (228) 343-5338



Bethala, Yashashree L., MD, Internal Medicine
Biloxi Internal Medicine Clinic, PA
147 Reynoir Street, Suite 101
Biloxi, MS 39530
Tel: (228) 374-2051
Fax: (228) 374-5741



Black, Arthur D., MD, Orthopedic Surgery
Memorial Orthopaedic Surgeons
2781 CT Switzer Dr, Suite 402
Biloxi, MS 39531
Tel: (228) 575-2636
Fax: (228) 385-1595

Memorial Medical Staff Members



Black, Jason L., MD, Emergency Medicine

Memorial Hospital Gulfport (Emergency)
4500 13th Street
Gulfport, MS 39501
Tel: (228) 575-2000
Fax: (228) 867-4124



Blackburn, Scott, DO, General Surgery

Memorial General Surgery
1340 Broad Avenue, Suite 240
Gulfport, MS 39501
Tel: (228) 575-1200
Fax: (228) 575-1205



Blackledge Jr., Thomas R., MD, Family Medicine

Tel:
Fax:



Blakeslee, Mallory D., DO, Emergency Medicine

Memorial Hospital Gulfport (Emergency)
4500 13th Street
Gulfport, MS 39501
Tel: (228) 575-2000
Fax: (228) 867-4124



Blatz, Peter J., MD, Infectious Disease

Memorial Infectious Disease
1340 Broad Avenue Suite 300
Gulfport, MS 39501
Tel: (228) 575-2700
Fax: (228) 575-2710



Blomberg, Christopher S., MD, Family Medicine

Memorial Physician Clinics at Cedar Lake
1756 Popp's Ferry Rd.
Biloxi, MS 39532
Tel: (228) 865-3200
Fax: (228) 575-1660



Bold, Jonathan W., MD, Radiology

Virtual Radiologic Professionals, LLC
11995 Singletree Ln, Suite 500
Eden Prairie, MN 55344
Tel: (952) 392-1100
Fax: (952) 935-2757

Memorial Medical Staff Members



Boles, Nathan D., MD, Internal Medicine

Memorial Hospital Gulfport (Hospitalist)
4500 13th Street
Gulfport, MS 39501
Tel: (228) 867-4396
Fax: (228) 867-5354



Bolkhovets, Dmitry S., Radiology

Virtual Radiologic Professionals, LLC
11995 Singletree Ln, STE 500
Eden Prairie, MN 55344
Tel: (952) 392-1100
Fax: (952) 935-275



Bondio, Nicholas, DO, Family Medicine

Memorial Diamondhead Family Medicine
45000 East Aloha Drive
Diamondhead, MS 39525
Tel: (228) 822-6006
Fax: (228) 255-3626



Borchelt, Mark, MD, Endocrinology

Memorial Endocrinology Clinic
4540 West Railroad St
Gulfport, MS 39501
Tel: (228) 867-6062
Fax: (228) 867-2598



Bosarge, Joseph R., MD, Critical Care Medicine, Intensivist

Memorial Hospital Gulfport
4500 13th Street
Gulfport, MS 39501
Tel: (228) 575-2130
Fax: (228) 575-2530



Boyle, Annalee C., MD, Maternal Fetal Medicine

Ob Hospitalist Group
777 Lowndes Hill Rd., Building 1
Greenville, SC 29607
Tel: (800) 967-2289
Fax: (864) 627-9920



Brashier, Matthew S., DO, General Surgery

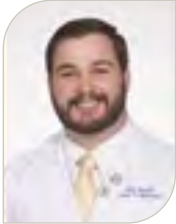
Tensegrity Physicians and Surgeons
147 Reynoir Street, Suite 101
Biloxi, MS 39530
Tel: (228) 617-1488
Fax: (833) 972-5118

Memorial Medical Staff Members



Bratton, Clay R., MD, Otolaryngology

Coastal ENT Associates
15910 Community Road Suite 100
Gulfport, MS 39503
Tel: 388-4585
Fax: 385-7610



Bratton, Dustin, MD, Emergency Medicine

Memorial Hospital Gulfport (Emergency)
4500 13th Street.
Gulfport, MS 39502
Tel: (228) 575-2000
Fax: (228) 867-4124



Brooks, Benjamin K., MD, Radiology

SMB Radiology
14231 Seaway Road, Suite 5003
Gulfport, MS 39503
Tel: (228) 864-4392
Fax: (228) 868-7103



Brooks, George B., DO, Family Medicine

Memorial Internal Medicine Clinic
1110 Broad Avenue, Suite 700
Gulfport, MS 39501
Tel: (228) 864-0314
Fax: (228) 864-0425



Brown, Jonathan D., MD, Orthopedic Surgery

Bienville Orthopaedic Specialists
1720-A Medical Park Dr, Suite 220
Biloxi, MS 39532
Tel: (228) 392-9355
Fax: (228) 392-1781



Bruni, Timothy G., MD, Pediatrics

Memorial Bruni Pediatric Clinic
9454-A Three Rivers Rd
Gulfport, MS 39503
Tel: (228) 575-2676
Fax: (228) 864-7415



Burns, Robert B., MD, Internal Medicine

Memorial Physician Clinics
Pascagoula Family Practice
4603 Hospital Rd
Pascagoula, MS 39581
Tel: (228) 822-6041
Fax: (228) 762-3839

Memorial Medical Staff Members



Burwell, Dudley S., MD, Orthopedic Surgery

Memorial Orthopaedic Surgeons
2781 CT Switzer Dr, Suite 402
Biloxi, MS 39531
Tel: (228) 575-2636
Fax: (228) 385-1595



Burwell, Joel B., DO, Family Medicine

Memorial Family Medicine
9454 Three Rivers Rd, Suite D
Gulfport, MS 39503
Tel: (228) 575-2660
Fax: (228) 863-0502



Bush-Coaxum, Sharon M., MD, OB/GYN

Memorial Hospital Gulfport Laborists
4500 13th Street
Gulfport, MS 39501
Tel: (228) 865-3263
Fax: (228) 867-5052



Byrnes, Edward J., DO, Emergency Medicine

Memorial Hospital Gulfport (Emergency)
4500 13th Street
Gulfport, MS 39501
Tel: (228) 575-2000
Fax: (228) 867-4124



Cable, Kalyl O., MD, Pediatric Cardiology

Pediatric Cardiology - UMMC
2500 N State Street
Jackson, MS 39216
Tel: (601) 815-1432
Fax: (601) 984-5283



Caldwell, Jennifer A., MD, Neonatology

Memorial Hospital Gulfport (Neonatal Unit)
4500 13th Street
Gulfport, MS 39501
Tel: (228) 865-3583
Fax: (228) 867-5398



Caplis, Charles A., DPM, Podiatry

Foot Specialists of South Mississippi
999 N. Halstead Road
Ocean Springs, MS 39564
Tel: (228) 818-2801
Fax: (228) 818-2803

Memorial Medical Staff Members



Carlson, Matthew, MD, Internal Medicine

Memorial Hospital Gulfport (Hospitalist)
4500 13th Street
Gulfport, MS 39501
Tel: (228) 867-4396
Fax: (228) 867-5354



Carter, James, M., MD, Radiology

Memorial Hospital Gulfport (Radiology)
4500 13th Street
Gulfport, MS 39501
Tel: (228) 865-3617
Fax: (228) 867-4137



Carter, John G., MD, Anesthesiology

Memorial Hospital Biloxi Anesthesiology
150 Reynoir Street
Biloxi, MS 39530
Tel: (228) 432-1571



Carter, Kristine M., MD, General Surgery

Memorial General Surgery
1340 Broad Avenue, Suite #240
Gulfport, MS 39501
Tel: (228) 575-1200
Fax: (228) 575-1205



Carter, Stacey R., DMD, Pediatric Dentistry

Coast Kids Pediatric Dentistry
1635 East Pass Road
Gulfport, MS 39507
Tel: (228) 896-5197
Fax: (228) 896-5192



Caruso, Michael J., DO, Radiology

Virtual Radiologic Professionals, LLC
11995 Singletree Ln, Suite 500
Eden Prairie, MN 55344
Tel: (952) 392-1121
Fax: (952) 942-3361



Case, Theresa V., DO, Pulmonary Disease

Memorial Heart and Lung Clinic
1340 Broad Avenue, Suite 410
Gulfport, MS 39501
Tel: (228) 575-1775
Fax: (228) 575-1770

Memorial Medical Staff Members



Cass, Allan W., MD, Radiation Oncology

Memorial Cancer Center
1340 Broad Avenue, Suite 140
Gulfport, MS 39501
Tel: (228) 575-2950
Fax: (228) 575-2951



Caswell, Ellen D., MD, Endocrinology

Memorial Physician Clinics Endocrinology - Pass Christian
118 Menge Avenue
Pass Christian, MS 39571
Tel: (228) 822-6770
Fax: (228) 896-5374



Cathey, Gene D., MD, Family Medicine

Memorial Physician Clinics at Cedar Lake
1756 Popp's Ferry Rd
Biloxi, MS 39532
Tel: (228) 865-3200
Fax: (228) 575-1660



Causey, Jack Q., MD, Pathology

Memorial Hospital Gulfport (Pathology)
4500 13th Street
Gulfport, MS 39501
Tel: (228) 575-2318
Fax: (228) 575-2380



Chamberlain, Ryan J., MD, Emergency Medicine

Memorial Hospital Gulfport (Emergency)
4500 13th Street
Gulfport, MS 39501
Tel: (228) 575-2000
Fax: (228) 867-4124



Chance, Rickey, DO, Family Medicine

Memorial Physician Clinics at Medical Park
1759 Medical Park Dr.
Biloxi, MS 39532
Tel: (228) 822-6030
Fax: (228) 207-1378



Chang, John K., MD, Radiology

Virtual Radiologic Professionals, LLC
11995 Singletree Ln, Suite 500
Eden Prairie, MN 55344
Tel: (952) 392-1121
Fax: (952) 942-3361

Memorial Medical Staff Members



Chapa, Jeff B., MD, Maternal Fetal Medicine

Ob Hospitalist Group
777 Lowndes Hill Rd., Building 1
Greenville, SC 29607
Tel: (800) 967-2289
Fax: (864) 627-9920



Chavan Dr., Niraj R., MD, Maternal Fetal Medicine

Ob Hospitalist Group
777 Lowndes Hill Rd., Building 1
Greenville, SC 29607
Tel: (800) 967-2289
Fax: (864) 627-9920



Chen, Yen C., MD, Pain Medicine

Sun Coast Pain Management Center PA
4 Doctors Drive, Suite C
Ocan Springs, MS 39664
Tel: (228) 818-0053
Fax: (228) 818-0110



Cheney, Bennett W., MD, Internal Medicine

Biloxi Internal Medicine Clinic, PA
147 Reynoir Street, Suite 101
Biloxi, MS 39530
Tel: (228) 374-2051
Fax: (228) 374-5741



Christie, Michael J., MD, OB/GYN

The Center of OB/GYN
2113 Government Street Building I
Ocean Springs, MS 39564
Tel: (228) 818-0025



Clark, Victoria W., MD, OB/GYN

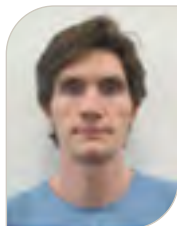
Memorial Woman's Clinic
2781 CT Switzer Dr., Suite 306
Biloxi, MS 39531
Tel: Office (228) 822-6328
Fax: (228) 207-3842



Clarke, Delphia M., MD, Radiology

Virtual Radiologic Professionals, LLC
11995 Singletree Ln, Suite 500
Eden Praire, MN 55344
Tel: (952) 392-1100
Fax: (952) 935-2757

Memorial Medical Staff Members



Coate, Ian D., MD, Urology
Urology Associates, LLC
15190 Community Rd., Suite 300
Gulfport, MS 39503
Tel: (228) 831-9699
Fax: (228) 831-3908



Cobb, Michael L., MD, Radiology
Virtual Radiologic Professionals, LLC
11995 Singletree Ln, Suite 500
Eden Prairie, MN 55344
Tel: (952) 392-1100
Fax: (952) 935-2757



Coleman, Brandi L., MD, Pediatrics
Children's of Mississippi-Bay St Louis
833 Hwy 90, Suite 17
Bay St. Louis, MS 39520
Tel: (228) 396-3141
Fax: (601) 496-8100



Coleman, Kelly M., MD, Pain Management
Bienville Orthopaedic Specialists
6300 E. Lake Blvd
Vancleave, MS 39565
Tel: (228) 230-2663
Fax: (228) 546-3257



Colley III, Byron J., MD, Cardiac Electrophysiology
Memorial Physician Clinics - Cardiac Electrophysiology
1408 44th Avenue
Gulfport, MS 39501
Tel: (228) 575-2589
Fax: (228) 575-1543



Compton, Phillip D., MD, Internal Medicine
Memorial Orange Grove Medical Specialties
15286 Community Road
Gulfport, MS 39503
Tel: (228) 822-6022
Fax: (228) 832-5195



Conger, Nicholas G., MD, Infectious Disease
Memorial Infectious Disease
1340 Broad Avenue, Suite 300
Gulfport, MS 39501
Tel: (228) 575-2700
Fax: (228) 575-2710

Memorial Medical Staff Members



Cottone, Joseph L., MD, Urology

Urology Associates, LLC
15190 Community Road, Suite 370
Gulfport, MS 39503
Tel: (228) 831-9699
Fax: (228) 831-3908



Couvillon, Larry C., MD, Emergency Medicine

Memorial Hospital Gulfport (Emergency)
4500 13th Street
Gulfport, MS 39501
Tel: (228) 575-2000
Fax: (228) 867-4124



Cowart, Dasha N., DO, Internal Medicine

Memorial Hospital Gulfport (Hospitalist)
4500 13th Street
Gulfport, MS 39501
Tel: (228) 867-4396
Fax: (228) 867-5354



Cox, Joseph T., MD, Orthopedic Surgery

Bienville Orthopaedic Specialists
15476 Dedeaux Rd, Suite B
Gulfport, MS 39503
Tel: (228) 679-3001
Fax: (228) 679-3039



Craig, Emma C., MD, Hospitalist

Memorial Hospital Gulfport (Hospitalist)
4500 13th Street
Gulfport, MS 39501
Tel: (228) 867-4396
Fax: (228) 867-5354



Criscuolo, John J., DO, Pediatric Cardiology

UMC Pediatric Cardiology
1721 Medical Park Dr, Suite 101
Biloxi, MS 39532
Tel: (228) 392-7046
Fax: (228) 392-7730



Crittenden, James C., MD, Internal Medicine

James C. Crittenden, MD
1001 Beningo Lane
Bay St Louis, MS 39520
Tel: (228) 467-1414
Fax: (228) 467-5863

Memorial Medical Staff Members



Crittenden, William C., MD, Internal Medicine

Memorial Hospital Gulfport (Hospitalist)
4500 13th Street
Gulfport, MS 39501
Tel: (228) 867-4396
Fax: (228) 867-5354



Crowder, Rowe III, MD, Internal Medicine

Bay Internal Medicine & Multispecialty
952 Green Meadow Road
Bay St Louis, MS 39520
Tel: (228) 463-1649
Fax: (228) 463-0138



Cuff, Ryan D., MD, Maternal Fetal Medicine

Ob Hospitalist Group
777 Lowndes Hill Rd., Building 1
Greenville, SC 29607
Tel: (800) 967-2289
Fax: (864) 627-9920



Cullinane Jr., William R., DO, Pulmonology

Memorial Hospital Intensivist Group
PO Box 1810
Gulfport, MS 39502
Tel: (228) 865-3151
Fax: (228) 867-4124



Cuzzi III, Mario J., DO, Internal Medicine

Memorial Hospital Gulfport (Hospitalist)
4500 13th Street
Gulfport, MS 39501
Tel: (228) 867-4396
Fax: (228) 867-5354



Dahlberg, Ben D., DO, Internal Medicine

Memorial Hospital Gulfport (Hospitalist)
4500 13th Street
Gulfport, MS 39501
Tel: (228) 867-4396
Fax: (228) 867-5354



Daigle, Donielle A., MD, OB/GYN

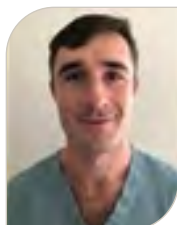
Premier Women's Health
14231 Seaway Rd, Suite 3004
Gulfport, MS 39503
Tel: (228) 206-1905
Fax: (228) 206-1917

Memorial Medical Staff Members



Dauterive, Alton H., MD, Vascular Surgery

Memorial Vascular Surgery Consultants
1340 Broad Avenue, Suite 220
Gulfport, MS 39501
Tel: (228) 575-1300
Fax: (228) 867-6423



Davee, Robert A., MD, Emergency Medicine

Memorial Hospital Gulfport Emergency
4500 13th Street
Gulfport, MS 39501
Tel: (228) 575-2000
Fax: (228) 867-4124



Davis, Jonathan N., MD, Emergency Medicine

Memorial Hospital Gulfport Emergency
4500 13th Street
Gulfport, MS 39501
Tel: (228) 575-2000
Fax: (228) 867-4124



Dawkins, Craig A., MD, Urology

Memorial Coast Urology Center
1340 Broad Avenue, Suite 210
Gulfport, MS 39501
Tel: (228) 575-1600
Fax: (228) 575-1603



Dean, Malcolm, MD, Internal Medicine

Memorial Hospital Gulfport (Hospitalist)
4500 13th Street
Gulfport, MS 39501
Tel: (228) 867-4396
Fax: (228) 867-5354



Deans, Amanda L., MD, Internal Medicine

Memorial Hospital Gulfport (Hospitalist)
4500 13th Street
Gulfport, MS 39501
Tel: (228) 867-4396
Fax: (228) 867-5354



Debuysere, Sean M., DO, General Surgery

Memorial General Surgery
1340 Broad Avenue, Suite 240
Gulfport, MS 39501
Tel: (228) 575-1200
Fax: (228) 575-1205

Memorial Medical Staff Members



DeJesus, Dennis, MD, Radiology
Virtual Radiologic Professionals, LLC
11995 Singletree Ln, Suite 500
Eden Prairie, MN 55344
Tel: (952) 595-1100
Fax: (952) 935-2757



Delgado, Nestor K., MD, OB/GYN
Gulf Coast OB/GYN
4507 Hospital Street
Pascagoula, MS 39581
Tel: (228) 769-1940
Fax: (833) 449-5709



Devlin-Schroll, Christie L., MD, Pediatrics
Memorial Hospital Gulfport (Pediatric Hospitalist)
4500 13th Street
Gulfport, MS 39503
Tel: (228) 867-4000
Fax: (228) 867-4127



Diaz, Hebe A., MD, OB/GYN
Hebe Diaz, MD
1720 Medical Park Drive, Suite 130C
Biloxi, MS 39532
Tel: (228) 392-8881
Fax: (228) 392-8887



Diaz, Luis M., MD, Plastic Surgery
Diaz Plastic Surgery
936 Tommy Munro Dr
Biloxi, MS 39532
Tel: (228) 396-2663
Fax: (228) 396-2664



Dibble, Joshua E., DO, Anesthesiology
Memorial Hospital Gulfport (Anesthesiology)
4500 13th Street
Gulfport, MS 39501
Tel: (228) 865-3281
Fax: (228) 867-5117



Dickson-Rishel, Dorothy J., PhD, Clinical Psychology
Memorial Pain Management
1340 Broad Avenue, Suite 450
Gulfport, MS 39501
Tel: (228) 865-3204
Fax: (228) 867-5377

Memorial Medical Staff Members



Dillon, Alva, MD, Gastroenterology

Memorial Digestive Health Center
3890 Bienville Blvd.
Ocean Springs, MS 39564
Tel: (228) 872-6291
Fax: (228) 875-3385



Dilts, Brent C., MD, Anesthesiology

Memorial Pain Medicine and Rehabilitation Services
1340 Broad Avenue, Suite 450
Gulfport, MS 39501
Tel: (228) 867-5006
Fax: (228) 867-5079



Dimitriades, Dimitrios, MD, Family Medicine

Memorial GME-Courthouse Family Practice
371 Courthouse Road
Gulfport, MS 39507
Tel: (228) 822-6624
Fax: (228) 265-5408



Dix, Brian R., DO, Anesthesiology

Coastal Chronic Pain Service PLLC
3017 13th Street
Gulfport, MS 39501
Tel: (228) 831-0050
Fax: (228) 831-1121



Donald, Catherine N., MD, Pediatrics

Children's of Mississippi
12259 Hwy 49, Suite C
Gulfport, MS 39503
Tel: (228) 396-3179
Fax: (601) 496-8102



Donovan, Timothy B., MD, Radiology

Virtual Radiologic Professionals, LLC
11995 Singletree Lane, Suite 500
Eden Prairie, MN 55344
Tel: (952) 392-1100
Fax: (952) 935-2757



Douglas, John W., MD, Pulmonary Disease

Memorial Gulf Coast Sleep and Pulmonary
9424 Three Rivers Road, Suite A
Gulfport, MS 39503
Tel: (228) 539-3356
Fax: (228) 539-3318

Memorial Medical Staff Members



Drouilhet, Rachel E., MD, OB/GYN

Memorial Seaway OBGYN (Premier Women's Health)
14231 Seaway Rd, Suite 3004
Gulfport, MS 39503
Tel: (228) 206-1905
Fax: (228) 206-1917



Dumont, Aaron S., MD, Neurosurgery

Memorial Neurosciences
1340 Broad Avenue, Suite 440
Gulfport, MS 39501
Tel: (228) 867-4855
Fax: (228) 867-4870



Duncombe, Vanessa L., MD, Family Medicine

Memorial Family Medicine-Acadian Plaza
12261 Hwy 49 North, Suite 11
Gulfport, MS 39503
Tel: (228) 867-5185
Fax: (228) 867-5189



Duplantier, Noel M., MD, OB/GYN

Memorial Hospital Gulfport Laborists
4500 13th Street
Gulfport, MS 39501
Tel: (228) 865-3263
Fax: (228) 867-5052



Dwai, Ashraf, MD, Nephrology

South Mississippi Nephrology
4300 B West Railroad Street
Gulfport, MS 39501
Tel: (228) 863-7393
Fax: (228) 868-6643



Dyess, Derek S., MD, Radiology

Virtual Radiologic Professionals, LLC
11995 Singletree Ln, Suite 500
Eden Prairie, MN 55344
Tel: (952) 392-1100
Fax: (952) 935-2757



Eakes, David, MD, Emergency Medicine

Memorial Hospital Gulfport (Emergency)
4500 13th Street
Gulfport, MS 39501
Tel: (228) 575-2000
Fax: (228) 867-4124

Memorial Medical Staff Members



Ebeid, Makram, MD, Pediatric Cardiology

Pediatric Cardiology - UMMC

2500 N State St

Jackson, MS 39216

Tel: (601) 815-1432

Fax: (601) 984-5283



Ebeledike, Chiemelie, MD, Emergency Medicine

Memorial Hospital Biloxi Emergency

150 Reynoir Street

Biloxi, MS 39530

Tel: (228) 432-1571



Ebeling, Joseph, DO, Anesthesiology

Somnifera BEST

14050 Dedeaux Road

Gulfport, MS 39503

Tel: (228) 702-2000

Fax: (228) 702-2018



Edmiston, Bart J., MD, Pain Management

Memorial Pain Management

14209 Cook Rd, Suite 100

Biloxi, MS 39532

Tel: (228) 575-2474

Fax: (228) 872-8214



Edupuganti, Hema M., MD, Internal Medicine

Memorial Hospital Gulfport (Hospitalist)

4500 13th Street

Gulfport, MS 39501

Tel: (228) 867-4396

Fax: (228) 867-5354



Eernisse, Pamela A., DPM, Podiatry

Foot Specialists of South Mississippi

999 N Halstead Road

Ocean Springs, MS 39564

Tel: (228) 818-2801

Fax: (228) 818-2803



Emerick, Matthew L., MD, Emergency Medicine

Memorial Hospital Gulfport Emergency

4500 13th Street

Gulfport, MS 39501

Tel: (228) 575-2000

Fax: (228) 867-4124

Memorial Medical Staff Members



Encarnacion, Carlos E., MD, Radiology
Virtual Radiologic Professionals, LLC
11995 Singletree Ln, Suite 500
Eden Praire, MN 55344
Tel: (952) 392-1100
Fax: (952) 935-2757



Engle, Kindra C., DO, Emergency Medicine
Memorial Hospital Biloxi (Emergency)
150 Reynoir Street
Biloxi, MS 39530
Tel: (228) 436-1191
Fax: (228) 436-1195



Ero, Osasere K., MD, Pediatric Cardiology
University of Mississippi Medical Center
2500 North State St.
Jackson, MS 39216
Tel: (601) 984-5259



Erwin, James W., MD, Hospitalist
Memorial Hospital Gulfport (Hospitalist)
4500 13th Street
Gulfport, MS 39501
Tel: (228) 867-4396
Fax: (228) 867-5354



Fagbongbe, Eniola O., MD, OB/GYN
Memorial Hospital Gulfport Laborists
4500 13th Street
Gulfport, MS 39501
Tel: (228) 865-3263
Fax: (228) 867-5052



Fairbrother, Erin L., MD, OB/GYN
Memorial Hospital Gulfport Laborists
4500 13th Street
Gulfport, MS 39501
Tel: (228) 865-3263
Fax: (228) 867-5052



Fairbrother, Samuel W., MD, Radiology
Memorial Hospital Gulfport Radiology
4500 13th Street
Gulfport, MS 39501
Tel: (228) 865-3617
Fax: (228) 867-4137

Memorial Medical Staff Members



Ferrera, Fernando H., MD, Orthopedic Surgery

Department of Orthopedic Surgery
301 Fisher Street
81st MSGS/SGCQO
Keesler AFB, MS 39534
Tel: (228) 377-6725



Finlay, Darrell G., MD, Gastroenterology

Memorial Gulf Coast Gastroenterology
14209 Cook Rd, Suite 200
St. Martin, MS 39532
Tel: (228) 867-4150
Fax: (228) 875-9558



Fiorito, Thomas F., MD, Radiology

Virtual Radiologic Professionals, LLC
11995 Singletree Ln, Suite 500
Eden Prairie, MN 55344
Tel: (952) 392-1100
Fax: (952) 935-2757



Fletcher, James D., MD, Radiology

Virtual Radiologic Professionals, LLC
11995 Singletree Ln, Suite 500
Eden Prairie, MN 55344
Tel: (952) 392-1100
Fax: (952) 935-2757



Folse, Yvette S., MD, Physical Medicine & Rehabilitation

Memorial Physician Clinics Broad Avenue Orthopedics
1397 Broad Avenue
Gulfport, MS 39501
Tel: (228) 575-1945
Fax: (228) 575-1964



Fordham, Zackary W., MD, Emergency Medicine

Memorial Hospital Gulfport (Emergency)
4500 13th Street
Gulfport, MS 39501
Tel: (228) 575-2000
Fax: (228) 867-4124



Fox, Stephen G., MD, Radiology

Virtual Radiologic Professionals, LLC
11995 Singletree Ln, Suite 500
Eden Prairie, MN 55344
Tel: (952) 392-1100
Fax: (952) 935-2757

Memorial Medical Staff Members



Frame, Kevin C., MD, Radiology
Virtual Radiologic Professionals, LLC
11995 Singletree Ln, Suite 500
Eden Praire, MN 55344
Tel: (952) 392-1100
Fax: (952) 935-2757



Fratesi, Garrett, DO, Family Medicine
Memorial Physician Clinic - Diamondhead Family Medicine
45000 E Aloha Drive
Diamondhead, MS 39525
Tel: (228) 822-6006
Fax: (228) 255-3626



Fratti, Juan D., MD, Cardiology
Southern Mississippi Heart Center, P.A.
3704 Bienville Blvd., Suite B
Ocean Springs, MS 39564
Tel: (228) 872-4040
Fax: (228) 875-2387



Fussell, Stephanie, MD, Oncology
Memorial Medical Oncology
1340 Broad Avenue, Suite 330
Gulfport, MS 39501
Tel: (228) 575-1234
Fax: (228) 867-4828



Gaddy, Donald K., MD, OB/GYN
Gulfport OB & Gynecological Clinic, PA
4502 Old Pass Rd
Gulfport, MS 39501
Tel: 863-9977
Fax: 863-9912



Gaddy, Ira E., MD, Ophthalmology
Gaddy Eye Clinic
10051 Lorraine Road
GULFPORT, MS 39503
Tel: (228) 539-7762
Fax: (228) 539-4953



Gaddy, James H., MD, OB/GYN
Memorial Hospital Gulfport Laborists
4500 13th Street
Gulfport, MS 3901
Tel: (228) 865-3263
Fax: (228) 867-5052

Memorial Medical Staff Members



Gambala, Cecilia T., MD, Maternal Fetal Medicine

Tulane University School of Medicine
1430 Tulane Avenue
Department of Obstetrics and Gynecology #8611
New Orleans, LA 70112
Tel: (504) 988-214
Fax: (504) 922-2943



Gaskill, Sandy Thao T., DMD, Pediatric Dentistry

Coast Kids Pediatric Dentistry
1635 East Pass Road
Gulfport, MS 39507
Tel: (228) 896-5197
Fax: (228) 896-5192



Gauriloff-Rothenberg, Jane B., MD, Radiology

Virtual Radiologic Professionals, LLC
11995 Singletree Ln, Suite 500
Eden Prairie, MN 55344
Tel: (952) 392-1100
Fax: (952) 935-2757



Gaymes, Charles, MD, Pediatric Cardiology

Pediatric Cardiology - UMMC
2500 N State St
Jackson, MS 39216
Tel: (601) 815-1432
Fax: (601) 984-5283



Gelman, Vadim R., MD, OB/GYN

Memorial Hospital Gulfport Laborists
4500 13th Street
Gulfport, MS 39501
Tel: (228) 865-3263
Fax: (228) 867-5052



Gentry, James H., DO, Anesthesiology

Somnifera BEST
14050 Dedeaux Road
Gulfport, MS 39503
Tel: (228) 702-2000
Fax: (228) 702-2018



Ghaffari, Bitra A., MD, Family Medicine

Hancock Family Medicine
4433 Leisure Time Dr
Diamondhead, MS 39525
Tel: (228) 575-2848
Fax: (228) 586-9230

Memorial Medical Staff Members



Gilfeather, Maryellyn, MD, Radiology

Virtual Radiologic Professionals, LLC
11995 Singletree Ln, Suite 500
Eden Prairie, MN 55344
Tel: (952) 392-1100
Fax: (952) 935-2757



Gill, Nathan S., DO, Wound Care

Memorial Hospital Wound Care
4500 13th Street
Gulfport, MS 39501
Tel: (228) 867-4499
Fax: (228) 867-5027



Gioe, Scott M., MD, Gastroenterology

Memorial Gastroenterology Center
4500 West Railroad Street
Gulfport, MS 39501
Tel: (228) 863-8836
Fax: (228) 864-4417



Goffigan, John C., MD, Radiology

Virtual Radiologic Professionals, LLC
11995 Singletree Ln, Suite 500
Eden Prairie, MN 55344
Tel: (952) 392-1100
Fax: (952) 935-2757



Gold, Robert G., MD, Urology

Memorial Coast Urology Center
1340 Broad Ave., Suite 210
Gulfport, MS 39501
Tel: (228) 575-1600
Fax: (228) 575-1603



Gomez Siegert, Olga J., MD, Neuroscience

Tulane Center for Clinical Neurosciences
131 S. Robertson Street
New Orleans, LA 70112
Tel: (504) 988-5565
Fax: (504) 988-5793



Goodfellow, Keith G., MD, OB/GYN

Memorial Biloxi Medical Group OB/GYN
147 Reynoir Street, Suite 105
Biloxi, MS 39530
Tel: (228) 436-6658
Fax: (228) 432-9455

Memorial Medical Staff Members



Goodman, Haley H., MD, Emergency Medicine
Memorial Hospital Gulfport - Emergency Department
4500 Thirteenth St.
Gulfport, MS 39501
Tel: (228) 575-2000
Fax: (228) 867-4124



Gorgi-Mikhail, Magdy Y., MD, Internal Medicine
MPC Cowan Internal Medicine
350 Cowan Road
Gulfport, MS 39507
Tel: (228) 206-7054
Fax: (228) 604-0905



Grady, John, MD, Internal Medicine
Memorial Hospital Gulfport (Hospitalist)
4500 13th Street
Gulfport, MS 39501
Tel: (228) 867-4396
Fax: (228) 867-5354



Graham, Joseph A., DO, Vascular Surgery
Memorial Vascular Surgery Consultants
1340 Broad Avenue, Suite 220
Gulfport, MS 39501
Tel: (228) 575-1300
Fax: (228) 867-6423



Grant, Walter K., MD, Pediatrics
Children's of Mississippi
12259 Hwy 49, Suite C
Gulfport, MS 39503
Tel: (228) 396-3179
Fax: (601) 496-8102



Gray, Jim P., MD, Radiology
Memorial Hospital Gulfport (Radiology)
4500 13th Street
Gulfport, MS 39501
Tel: (228) 865-3617
Fax: (228) 867-4137



Gregory, Sandra L., MD, Radiation Oncology
Memorial Radiation Oncology Services
1340 Broad Avenue, Suite 140
Gulfport, MS 39501
Tel: (228) 575-2950
Fax: (228) 575-2951

Memorial Medical Staff Members



Gremillion, Avit J., MD, Ophthalmology

Ophthalmology - Vitreoretinal Surgery
962 Tommy Munro Dr, Suite B
Biloxi, MS 39532
Tel: (228) 388-7000
Fax: (833) 849-9899



Griffith, Cameron S., MD, Ophthalmology

Tri County Eye Clinic
431 Bertucci Blvd,
Biloxi, MS 39531
Tel: (228) 385-2020
Fax: (228) 388-9435



Griffith, Kevin L., MD, Emergency Medicine

Memorial Hospital Gulfport (Emergency)
4500 13th Street
Gulfport, MS 39501
Tel: (228) 575-2000
Fax: (228) 867-4124



Grow, Chelsea R., DO, Neurology

Memorial Neuroscience
1340 Broad Avenue, Suite 440
Gulfport, MS 39501
Tel: (228) 867-4855
Fax: (228) 867-4870



Gruich, Mitchell J. Jr., Pediatrics

Memorial Biloxi Inpatient Pediatrics
150 Reynoir Street
Biloxi, MS 39530
Tel: (228) 385-1711
Fax: (228) 385-7777



Gupta, Richa, MD, Rheumatology

Memorial Rheumatology Clinic
1110 Broad Avenue, Suite 500
Gulfport, MS 39501
Tel: (228) 575-2588
Fax: (228) 864-4154



Gurewitsch Allen, Edith D., MD, Maternal Fetal Medicine

Ob Hospitalist Group
777 Lowndes Hill Rd., Building 1
Greenville, SC 29607
Tel: (800) 967-2289
Fax: (864) 627-9920

Memorial Medical Staff Members



Gwin, Hannah, MD, Internal Medicine

Memorial South Coast Internists
1340 Broad Avenue, Suite 310
Gulfport, MS 39501
Tel: (228) 575-1400
Fax: (228) 575-1414



Hagen, Matthew L., DO, Hospitalist

Memorial Hospital Gulfport (Hospitalist)
4500 13th Street
Gulfport, MS 39501
Tel: (228) 867-4396
Fax: (228) 867-5354



Hall, Jason T., DO, Pediatrics

Memorial Hospital Gulfport (Pediatric Hospitalist)
4500 13th Street
Gulfport, MS 39501
Tel: (228) 865-3386



Hamid, Sarah, MD, Hospitalist

Memorial Hospital Gulfport (Hospitalist)
4500 13th Street
Gulfport, MS 39501
Tel: (228) 867-4396
Fax: (228) 867-5354



Hamilton, Angela, DO, Emergency Medicine

Memorial Hospital Gulfport (Emergency)
4500 13th Street
Gulfport, MS 39501
Tel: (228) 575-2000
Fax: (228) 867-4124



Hamilton, Murray O., MD, Radiology

Virtual Radiologic Professionals, LLC
11995 Singletree Ln, Suite 500
Eden Prairie, MN 55344
Tel: (952) 392-1100
Fax: (952) 935-2757



Hand, Karen E., MD, Orthopedic Surgery

Memorial Orthopaedic Surgeons
2781 CT Switzer Dr, Suite 402
Biloxi, MS 39531
Tel: (228) 575-2636
Fax: (228) 385-1595

Memorial Medical Staff Members



Handy, Chalonda R., MD, Hospitalist
Memorial Hospital Gulfport (Hospitalist)
4500 13th Street
Gulfport, MS 39501
Tel: (228) 867-4396
Fax: (228) 867-5354



Hanif, Muzammil Z., MD, Radiology
Virtual Radiologic Professionals, LLC
11995 Singletree Ln, Suite 500
Eden Prairie, MN 55344
Tel: (952) 392-1100
Fax: (952) 935-2757



Hardwick, James C., MD, Cardiology
Memorial Coast Heart Institute
4215 15th Street
Gulfport, MS 39501
Tel: (228) 863-5211
Fax: (228) 863-4101



Harris, Robert B., MD, General Surgery
Memorial Biloxi Surgical Services
147 Reynoir Street
Biloxi, MS 39530
Tel: (228) 436-1348
Fax: (228) 436-1373



Hayslett, Andrew R., MD, Pediatrics
UMMC Department of Pediatrics
2500 North State St.
Jackson, MS 39216
Tel: (601) 984-4027
Fax: (228) 865-3004



Head, Barbara B., MD, Maternal Fetal Medicine
Ob Hospitalist Group
777 Lowndes Hill Rd., Building 1
Greenville, SC 29607
Tel: (800) 967-2289
Fax: (864) 627-9920



Hecht, Adam R., MD, Radiology
Virtual Radiologic Professionals, LLC
11995 Singletree Ln, Suite 500
Eden Prairie, MN 55344
Tel: (952) 595-1100
Fax: (952) 935-2757

Memorial Medical Staff Members



Hellfeld, Megan W., MD, Radiology
Virtual Radiologic Professionals, LLC
11995 Singletree Ln, Suite 500
Eden Praire, MN 55344
Tel: (952) 392-1100
Fax: (952) 935-2757



Helsel Dr., Tessa, DO, Family Medicine
Memorial Internal Medicine
835 Thames Avenue
Bay St. Louis, MS 39520
Tel: (228) 466-4977
Fax: (228) 463-0827



Henderson, Everett R., MD, Neonatology
Memorial Hospital Gulfport (Neonatal Unit)
4500 13th Street
Gulfport, MS 39501
Tel: (228) 865-3583
Fax: (228) 867-5398



Herring, Calvin W., MD, Radiology
Virtual Radiologic Professionals, LLC
11995 Singletree Ln, Suite 500
Eden Praire, MN 55344
Tel: (952) 595-1100
Fax: (952) 935-2757



Hiebert, Timothy C., MD, Pulmonary Disease
Pulmonary and Sleep Medicine
3418 Main Street
Moss Point, MS 39563
Tel: (228) 474-6111
Fax: (228) 474-6113



Hightower, Olivia, MD, Oncology
Hematology Oncology Partners (HOPe)
1340 Broad Avenue, Suite 330
Gulfport, MS 39501
Tel: (228) 575-1234
Fax: (228) 867-4828



Holland, James S., MD, Allergy & Immunology
Memorial Allergy & Immunology Clinic
12261 Hwy 49 North, Suite 11
Gulfport, MS 39503
Tel: (228) 867-5187
Fax: (228) 867-5189

Memorial Medical Staff Members



Holland, Maureen S., MD, Pediatrics
Children's of Mississippi (Bridgewater)
8950 Lorraine Rd, Suite A
Gulfport, MS 39503
Tel: (228) 396-3238
Fax: (601) 496-8103



Hopkins, Erica H., MD, Nephrology
Memorial South Mississippi Nephrology
4300 B West Railroad Street
Gulfport, MS 39501
Tel: (228) 863-7393
Fax: (228) 868-6643



Hopkins, Marc D., MD, Gastroenterology
Memorial Gastroenterology Center
4500 West Railroad Street
Gulfport, MS 39501
Tel: (228) 863-8836
Fax: (228) 864-4417



Hughes, Jason D., MD, Radiology
Virtual Radiologic Professionals, LLC
11995 Singletree Ln, Suite 500
Eden Prairie, MN 55344
Tel: (952) 392-1100
Fax: (952) 935-2757



Hughes, William M., MD, Urology
Urology Associates, LLC
15190 Community Road, Suite 300
Gulfport, MS 39503
Tel: (228) 831-9699
Fax: (228) 831-3908



Hughley, Ann D., MD, Internal Medicine
Memorial Hospital Gulfport (Hospitalist)
4500 13th Street
Gulfport, MS 39501
Tel: (228) 867-4396
Fax: (228) 867-5354



Hutto, Eric D., MD, Anesthesiology
Somnifera BEST
14050 Dedeaux Road
Gulfport, MS 39503
Tel: (228) 702-2000
Fax: (228) 702-2018

Memorial Medical Staff Members



Hyde, Eric L., DDS, Pediatric Dentistry

Eric Hyde, DDS
15236 Dedeaux Road
Gulfport, MS 39503
Tel: (228) 832-3111
Fax: (228) 832-3117



Ilercil, Orhan, MD, Neurosurgery

Memorial Neurosurgery
1340 Broad Ave., Suite 440
Gulfport, MS 39501
Tel: (228) 867-4856
Fax: (228) 867-4857



Irvin, Ralph L., MD, Anesthesiology

Memorial Surgery Center - Cedar Lake
4500 13th Street
Gulfport, MS 39501
Tel: (228) 575-1582
Fax: (228) 867-5079



Isikal, Olusola O., MD, Critical Care Medicine

Memorial Hospital Intensivist Group
PO Box 1810
Gulfport, MS 39502
Tel: (228) 865-3151
Fax: (228) 867-4124



Iverson, Kyle J., MD, General Surgery

Memorial Gulfport Surgery Clinic
1312 44th Ave.
Gulfport, MS 39501
Tel: (228) 539-5858
Fax: (228) 539-8327



Jackson, Timothy D., MD, SA-C, Orthopedic Surgery

Memorial Orthopedic Trauma Surgeons
1397 Broad Avenue
Gulfport, MS 39501
Tel: (228) 867-5012
Fax: (228) 575-1964



Jalal, Shwan, MD, Cardiology

Memorial Coast Heart Institute
4215 15th Street
Gulfport, MS 39501
Tel: (228) 863-5211
Fax: (228) 863-4101

Memorial Medical Staff Members



Jasti, Rahul, MD, Radiology

Virtual Radiologic Professionals, LLC
11995 Singletree Ln, Suite 500
Eden Prairie, MN 55344
Tel: (952) 595-1100
Fax: (952) 935-2757



Jernigan, Grant M., DO, Hospitalist

Memorial Hospital Gulfport (Hospitalist)
4500 13th Street
Gulfport, MS 39501
Tel: (228) 867-4396
Fax: (228) 867-5354



Jimenez, Guillermo R., MD, Radiology

Virtual Radiologic Professionals, LLC
11995 Singletree Ln, Suite 500
Eden Prairie, MN 55344
Tel: (952) 392-1100
Fax: (952) 935-2757



Johansen, R. Lance, MD, Orthopedic Surgery

Mississippi Orthopaedic Institute
2781 CT Switzer Sr. Drive
Biloxi, MS 39531
Tel: (228) 328-2400
Fax: (228) 328-4200



Johns, Stephen P., MD, Family Medicine

HealthSouth Rehab Hospital of Gulfport
4500 13th Street
Gulfport, MS 39501
Tel: (228) 867-4000



Johnson, Kelly D., MD, Pediatrics

Children's of Mississippi
University of Mississippi Medical Center
1721 Medical Park Drive Suite 101
Biloxi, MS 39532
Tel: (228) 392-7046



Johnson, Kendrick, MD, Neuroscience

Tulane Center for Clinical Neurosciences
131 S. Robertson Street
New Orleans, LA 70112
Tel: (504) 988-5565
Fax: (504) 988-5793

Memorial Medical Staff Members



Jones, Jonathan D., MD, OB/GYN

Memorial Women's Clinic
4577 13th Street
Gulfport, MS 39501
Tel: (228) 864-2752
Fax: (228) 214-4206



Jozefowicz, Jill A., DO, General Surgery

Memorial Hospital Gulfport (Surgery)
4500 13th Street
Gulfport, MS 39501
Tel: (228) 865-3257



Juakiem, Wassem Y., MD, Gastroenterology

Memorial Digestive Health Center
3890 Bienville Blvd.
Ocean Springs, MS 39564
Tel: (228) 872-6291
Fax: (228) 875-3385



Justice, Adam E., DO, Emergency Medicine

Memorial Hospital Gulfport (Emergency)
4500 13th Street
Gulfport, MS 39501
Tel: (228) 575-2000
Fax: (228) 867-4124



Kadochi, Musunkumuki, MD, Pediatric Cardiology

UMC Pediatric Cardiology
1721 Medical Park Dr., Suite 101
Biloxi, MS 39532
Tel: (228) 392-7046
Fax: (228) 392-7730



Kaplan, Liat J., MD, Radiology

Virtual Radiologic Professionals, LLC
11995 Singletree Ln, Suite 500
Eden Prairie, MN 55344
Tel: (952) 392-1100
Fax: (952) 935-2757



Karlson, Kristina L., MD, OB/GYN

Keesler Medical Center
301 Fisher Street
Keesler AFB, MS 39534
Tel: (228) 376-3779

Memorial Medical Staff Members



Karpitskaya, Yekaterina, MD, Orthopedic Surgery
Bienville Orthopaedic Specialists
6300 E. Lake Blvd
Vancleave, MS 39565
Tel: (228) 230-2663
Fax: (228) 546-3257



Kathmann, Brett, MD, Emergency Medicine
Memorial Hospital Gulfport (Emergency)
4500 13th Street
Gulfport, MS 39501
Tel: (228) 575-2000
Fax: (228) 867-4124



Keel, Isaac J., DO, Radiology
Memorial Hospital Gulfport (Radiology)
4500 Thirteenth Street
Gulfport, MS 39501
Tel: (228) 865-3617
Fax: (228) 867--4137



Keimig, Kathy J., MD, Family Medicine
Memorial Physician Clinics-St Martin
14213 Cook Rd, Building A
St. Martin, MS 39532
Tel: (228) 575-2545
Fax: (228) 872-8029



Kelleher, Inez M., MD, Orthopedic Surgery
Memorial Broad Avenue Orthopedics
1397 Broad Avenue
Gulfport, MS 39501
Tel: (228) 575-1945
Fax: (228) 575-1964



Kenyherz, Gregory E., MD, Radiology
Virtual Radiologic Professionals, LLC
11995 Singletree Ln, Suite 500
Eden Prairie, MN 55344
Tel: (952) 392-1100
Fax: (952) 935-2757



Kerby, Sean C., MD, Family Medicine
Memorial Physician Clinics - Bridgewater
8970 Lorraine Road
Gulfport, MS 39503
Tel: (228) 575-1787
Fax: (228) 896-5269

Memorial Medical Staff Members



Kesterson, Oliver L., MD, Neurosurgery
Memorial Physician Clinics - Neuro and Spine
14209 Cook Road, Suite 100
Biloxi, MS 39532
Tel: (228) 575-2536
Fax: (228) 872-0559



Khalid, Sidra, MD, Hematology & Oncology
Memorial Medical Oncology
1340 Broad Avenue, Suite 270
Gulfport, MS 39501
Tel: (228) 575-1234
Fax: (228) 867-4866



Khimji, Tasneem N., MD, Radiology
Virtual Radiologic Professionals, LLC
11995 Singletree Ln, Suite 500
Eden Prairie, MN 55344
Tel: (952) 392-1100
Fax: (952) 935-2757



Khoury, Nure B., Neurology
Tulane Center for Clinical Neurosciences
131 S. Robertson Street, Suite 1300
New Orleans, LA 70112
Tel: (504) 988-5565
Fax: (504) 988-5793



Kioseff, Dona, MD, OB/GYN
Ochsner Health - OB/GYN
4502 Old Pass Road
Gulfport, MS 39501
Tel: (228) 863-9977
Fax: (228) 863-9912



Kommineni, Krishna S., MBBS, MD, Rheumatology
Memorial Rheumatology Clinic
1110 Broad Avenue, Suite 500
Gulfport, MS 39501
Tel: (228) 575-2588
Fax: (228) 864-4154



Koskan, Irene, MD, Internal Medicine
Memorial Internal Medicine
835 Thames Avenue
Bay St. Louis, MS 39520
Tel: (228) 575-2383
Fax: (228) 463-0827

Memorial Medical Staff Members



Kotti, George H., MD, Critical Care Medicine
Memorial Hospital Gulfport (ICU) Critical Care Dept.
4500 13th Street
Gulfport, MS 39501
Tel: (228) 865-3275
Fax: (228) 867-4066



Koveleskie, Joseph R., MD, Anesthesiology
Somnifera BEST
14050 Dedeaux Road
Gulfport, MS 39503
Tel: (228) 702-2000
Fax: (228) 702-2018



Kraft, Ashley R., MD, Otolaryngology
Memorial Physician Clinics Coastal ENT Associates
4300 15th Street
Gulfport, MS 39501
Tel: (228) 864-0828
Fax: (228) 385-7610



Krentel, Rod G., MD, Radiation Oncology
Memorial Radiation Oncology Services
1340 Broad Avenue, Suite 140
Gulfport, MS 39501
Tel: (228) 575-2950
Fax: (228) 575-2951



Krystosek, Luke A., MD, Radiology
Virtual Radiologic Professionals, LLC
11995 Singletree Ln, Suite 500
Eden Prairie, MN 55344
Tel: (952) 392-1100
Fax: (952) 935-2757



Kuebler, Richard S., MD, Radiology
Virtual Radiologic Professionals, LLC
11995 Singletree Ln, Suite 500
Eden Prairie, MN 55344
Tel: (952) 392-1100
Fax: (952) 935-2757



Kuhlmann, David M., MD, Neonatology
Memorial Hospital Gulfport (Neonatal Unit)
4500 13th Street
Gulfport, MS 39501
Tel: (228) 865-3583
Fax: (228) 867-5398

Memorial Medical Staff Members



Kulpa, Janus J., MD, Family Medicine

Memorial Physician Clinics
3434 Bienville Blvd
Ocean Springs, MS 39564
Tel: (228) 575-2180
Fax: (228) 875-1124



Kwentus, Joseph A., MD, Psychiatry

Precise Research Centers
3531 Lakeland Drive, Suite 1060
Flowood, MS 39232
Tel: (601) 420-5812



Landry, Blake C., MD, OB/GYN

Memorial Hospital Gulfport Laborists
4500 13th Street
Gulfport, MS 39501
Tel: (228) 865-3263
Fax: (228) 867-5052



Lanier, Douglas C., MD, Nephrology

Memorial South Mississippi Nephrology
4300 B West Railroad Street
Gulfport, MS 39501
Tel: (228) 863-7393
Fax: (228) 868-6643



Laprad, Debra L., MD, Ophthalmology

Eye Associates of the South
1720-A Medical Park Dr Suite 330
Biloxi, MS 39532
Tel: (228) 396-5185
Fax: (228) 396-5186



LaRosa, David V., MD, Internal Medicine

Memorial South Coast Internists
1340 Broad Avenue, Suite 310
Gulfport, MS 39501
Tel: (228) 575-1400
Fax: (228) 575-1414



Latack, Wayne A., MD, Hospitalist

Memorial Hospital Gulfport (Hospitalist)
4500 13th St
Gulfport, MS 39501
Tel: (228) 867-4396
Fax: (228) 867-5354

Memorial Medical Staff Members



Lawrence, Daniel R., DO, Pediatrics
Children's of Mississippi (Bridgewater)
8950 Lorraine Rd, Suite A
Gulfport, MS 39503
Tel: (228) 396-3238
Fax: (601) 496-8103



Lawson, Eric D., MD, Radiology
Memorial Hospital Gulfport (Radiology)
4500 13th Street
Gulfport, MS 39501
Tel: (228) 865-3617
Fax: (228) 867-4137



Layman, Ryan T., MD, Urology
Urology Associates, LLC
15190 Community Rd., Suite 300
Gulfport, MS 39503
Tel: (228) 831-9699
Fax: (228) 831-3908



Leatherbury, Clifton T., MD, Radiology
Memorial Hospital Gulfport (Radiology)
4500 13th Street
Gulfport, MS 39501
Tel: (228) 865-3617
Fax: (228) 867-4137



Leatherman, Bryan D., MD, Otolaryngology
Gulf Coast ENT
9000 Loraine Rd
Gulfport, MS 39503
Tel: (228) 864-2121
Fax: (228) 678-0950



Leatherwood, Lynn E., MD, Internal Medicine
Memorial Orange Grove Medical Specialties
15286 Community Road
Gulfport, MS 39503
Tel: (228) 822-6022
Fax: (228) 832-5195



Lee, John R., DO, Family Medicine
Memorial Ocean Springs Primary Care
1501 Bienville Blvd
Ocean Springs 39564
Tel: (228) 822-6110
Fax: (228) 875-8048

Memorial Medical Staff Members



Lee, Marcus W., MD, Pediatric Neurology
Children's of Mississippi
University of Mississippi Medical Center
1721 Medical Park Drive Suite 101
Biloxi, MS 39532
Tel: (228) 392-7046



Leis, Henry, MD, Orthopedic Surgery
Bienville Orthopaedic Specialists
15476 Dedeaux Rd, Suite B
Gulfport, MS 39503
Tel: 679-3001 or (228) 546-2218
Fax: 679-3039



Lemeshko, Sergy V., MD, Radiology
Virtual Radiologic Professionals, LLC
11995 Singletree Lane, Suite 500
Eden Prairie, MN 55344
Tel: (952) 392-1100
Fax: (952) 935-2757



Lenox, Valerie, MD, Internal Medicine
Memorial Physician Clinics Cedar Lake
1756 Popp's Ferry Rd
Biloxi, MS 39532
Tel: (228) 865-3200
Fax: (228) 575-1660



Lerro, Desiree, DO, Radiology
Virtual Radiologic Professionals, LLC
11995 Singletree Ln, Suite 500
Eden Prairie, MN 55344
Tel: (952) 392-1100
Fax: (952) 935-2757



Levin, Philip L., MD, Emergency Medicine
Memorial Hospital Gulfport (Emergency)
4500 13th Street
Gulfport, MS 39501
Tel: (228) 575-2000
Fax: (228) 867-4124



Lewis, Alan T., MD, Dermatology
Modern Dermatology and Aesthetics
1245 42nd Avenue
Gulfport, MS 39501
Tel: (228) 864-8049
Fax: (228) 864-7655

Memorial Medical Staff Members



Liapin, Ivan A., MD, Emergency Medicine
Memorial Hospital Gulfport Emergency Department
4500 13th Street
Gulfport, MS 39501
Tel: (228) 575-2000



Libys, Jay J., MD, Cardiology
Memorial Hospital Gulfport
1391 Broad Avenue
Gulfport, MS 39501
Tel: (228) 863-8868
Fax: (228) 863-8956



Liner, Zachary J., MD, Interventional Neuroradiology
Neurocare of the South
648 Crestwood Blvd.
Covington, LA 70433
Tel: (985) 805-2555
Fax: (985) 400-5303



Liou, Wayne W., MD, Teleradiology
Virtual Radiologic Professionals, LLC
11995 Singletree Ln, Suite 500
Eden Prairie, MN 55344
Tel: (952) 392-1100
Fax: (952) 935-2757



Little, Cole, MD, Emergency Medicine
Memorial Hospital Biloxi (Emergency)
150 Reynoir Street
Biloxi, MS 39530
Tel: (228) 432-1571



Lobrano, Charles M., MD, Anesthesiology
Memorial Hospital (Anesthesia)
4500 13th Street
Gulfport, MS 39501
Tel: (228) 865-3281
Fax: (228) 867-5117



Long, Raymond A., MD, Orthopedic Surgeon
Memorial Orthopedic Surgeons
4320 15th Street, Suite A
Gulfport, MS 39501
Tel: (228) 867-5012
Fax: (228) 575-1885

Memorial Medical Staff Members



Love-Grove, Nichole, DO, Hospitalist

Memorial Hospital Gulfport Hospitalist
4500 Thirteenth Street
Gulfport, MS 39501
Tel: (228) 867-4396
Fax: (228) 867-5354



Lozano, Marc, MD, Endocrinology

Memorial Physicians Clinic Endocrinology-Biloxi
147 Reynoir St., Suite 207
Biloxi, MS 39560
Tel: (228) 822-6845
Fax: (228) 822-6844



Lyell, Mark S., MD, Urology

Urology Associates
1153 Ocean Springs Road
Ocean Springs, MS 39564
Tel: (228) 819-8586



Maalouf, Mousa, MD, Internal Medicine

Memorial South Coast Internists
1340 Broad Avenue, Suite 310
Gulfport, MS 39501
Tel: (228) 575-1400
Fax: (228) 575-1414



Mace, Thomas P., MD, General Surgery

Memorial Gulfport Surgery Clinic
1312 44th Avenue
Gulfport, MS 39501
Tel: (228) 822-6160
Fax: (228) 822-6162



Maddox, Brian C., DO, Family Medicine

Memorial Ocean Springs Primary Care
1501 Bienville Blvd
Ocean Springs MS 39564
Tel: (228) 822-6110
Fax: (228) 875-8048



Malik, Umair Z., MD, Cardiology

Memorial Coast Heart Institute
4215 15th Street
Gulfport, MS 39501
Tel: (228) 863-5211
Fax: (228) 863-4101

Memorial Medical Staff Members



Mallett, John H., MD, OB/GYN
Memorial Biloxi Medical Group OB/GYN
147 Reynoir Street, Suite 105
Biloxi, MS 39530
Tel: (228) 436-6658
Fax: (228) 432-9455



Manns, Melantha D., MD, Internal Medicine
Memorial Hospital Gulfport (Hospitalist)
4500 13th Street
Gulfport, MS 39501
Tel: (228) 867-4396
Fax: (228) 867-5354



Marath, Biju, MD, Internal Medicine
Memorial South Mississippi Nephrology
4300 B West Railroad Street
Gulfport, MS 39501
Tel: (228) 863-7393
Fax: (228) 868-6643



Marrouche, Nassir F., MD, Cardiac Electrophysiology
Tulane University - Cardiac Electrophysiology
1430 Tulane Ave., #8548
New Orleans, LA 70112
Tel: (504) 988-1774
Fax: (504) 988-4237



Marsh, Andrew R., MD, Emergency Medicine
Memorial Hospital Gulfport (Emergency)
4500 13th Street
Gulfport, MS 39501
Tel: (228) 575-2000
Fax: (228) 867-4124



Marshall, Nyron T., MD, Internal Medicine
Memorial Family Medicine-Acadian Plaza
12261 Hwy 49 North, Suite 11
Gulfport, MS 39503
Tel: (228) 575-2176
Fax: (228) 575-2177



Martin, Brett S., MD, Radiology
Virtual Radiologic Professionals, LLC
11995 Singletree Ln, Suite 500
Eden Prairie, MN 55344
Tel: (952) 392-1100
Fax: (952) 935-2757

Memorial Medical Staff Members



Martin, Jessie, DO, Hospitalist
Memorial Hospital Gulfport
4500 Thirteenth St
Gulfport, MS 39501
Tel: (228) 867-4396
Fax: (228) 867-5354



Marucci, Catina N., MD, Anesthesiology
Memorial Surgery Center at Cedar Lake
1720 Medical Park Dr
Biloxi, MS 39532
Tel: (228) 702-2000



Matherne, Paul G., MD, Family Medicine
Paul Matherne, MD
1924 East Pass Rd
Gulfport, MS 39507
Tel: (228) 388-4862
Fax: (228) 388-2556



Matthews, Arthur M., MD, Urology
Urology Associates, LLC
15190 Community Rd Suite 370
Gulfport, MS 39503
Tel: 831-9699
Fax: 831-3908



McCabe, Maegen C., DMD, Pediatric Dentistry
Dr. Eric Hyde, DDS
15236 Dedeaux Rd
Gulfport, MS 39503
Tel: (228) 832-3111
Fax: (228) 832-3117



McCool, Haley M., MD, OB/GYN
Memorial Woman's Clinic
4577 13th Street
Gulfport, MS 39501
Tel: (228) 864-2752
Fax: (228) 214-4206



McCrary, Richard B., MD, Pediatrics
Children's of Mississippi
12259 Hwy 49, Suite C
Gulfport, MS 39503
Tel: (228) 396-3179
Fax: 832-5430

Memorial Medical Staff Members



McDonald, Philip B., MD, Radiology

Radiology Reports Online
2200 S. Main Street, Suite 210
Lombard, IL 60148
Tel: (630) 787-3423



McKay, Michael A., MD, OB/GYN

Premier Women's Health
14231 Seaway Rd, Suite 3004
Gulfport, MS 39503
Tel: (228) 206-1905
Fax: (228) 206-1917



McKee, John D., MD, Gastroenterology

Memorial Digestive Health Center
3890 Bienville Boulevard
Ocean Springs, MS 39564
Tel: (228) 872-6291
Fax: (228) 875-3385



McMurphy, Austin, DMD, Pediatric Dentist

Pediatric Dental Specialties
1070 Judge Sekul Avenue
Biloxi, MS 39530
Tel: (228) 374-8175
Fax: (228) 374-8115



McNair, Alfred E., MD, Gastroenterology

Memorial Digestive Health Center
3890 Bienville Blvd.
Ocean Springs, MS 39564
Tel: (228) 872-6291
Fax: (228) 875-3385



McNeese, Jason T., MD, Gastroenterology

Memorial Gulf Coast Gastroenterology
14209 Cook Rd, Suite 200
St. Martin, MS 39532
Tel: (228) 867-4150
Fax: (228) 875-9558



McQueen, Teresa S., MD, Radiology

Virtual Radiologic Professionals, LLC
11995 Singletree Ln, Suite 500
Eden Prairie, MN 55344
Tel: (952) 392-1100
Fax: (952) 935-2757

Memorial Medical Staff Members



Meadows, Bernard J., DPM, Podiatry
Bienville Orthopaedic Specialists
1720-A Medical Park Drive, Suite 220
Biloxi, MS 39532
Tel: (228) 392-9355
Fax: (228) 392-1781



Meekin, Gregory K., MD, Otolaryngology
Memorial Physician Clinics ENT
1201 31st Avenue
Gulfport, MS 39501
Tel: (228) 284-2177
Fax: (228) 871-7184



Melgar, Miguel A., MD, Neurosurgery
Memorial Neurosurgery
1340 Broad Avenue, Suite 440
Gulfport, MS 39501
Tel: (228) 867-4855
Fax: (228) 867-4857



Mestayer III, Roland J., MD, Radiology
Memorial Hospital Gulfport (Radiology)
4500 13th Street
Gulfport, MS 39501
Tel: (228) 865-3617
Fax: (228) 867-4137



Michel, Michael D., MD, Emergency Medicine
Memorial Hospital Gulfport (Emergency)
4500 13th Street
Gulfport, MS 39501
Tel: (228) 575-2000
Fax: (228) 867-4124

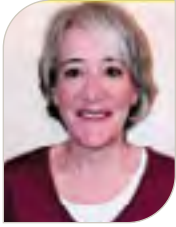


Mihnovets, Jonathan, DO, Hospitalist
Memorial Hospital Gulfport
4500 13th Street
Gulfport, MS 39501
Tel: (228) 867-4396
Fax: (228) 867-5354



Miles, Janice L., DO, Pulmonary Disease
Janice Miles, DO
3418 Main Street
Moss Point, MS 39563
Tel: (228) 474-6111
Fax: (228) 474-6113

Memorial Medical Staff Members



Miller, Kristen H., MD, Radiology
Virtual Radiologic Professionals, LLC
11995 Singletree Lane, Suite 500
Eden Prairie, MN 55344
Tel: (952) 392-1100
Fax: (952) 935-2757



Mishra, Abha, MD, Neurology
Memorial Neuroscience
1340 Broad Avenue, Suite 440
Gulfport, MS 39501
Tel: (228) 867-4855
Fax: (228) 867-4870



Moiduddin, Nasser, MD, Pediatrics
UMMC Department of Pediatrics
2500 North State St.
Jackson, MS 39216
Tel: (601) 984-4027
Fax: (228) 865-3004



Morais, Joshua D., MD, Radiology
Virtual Radiologic Professionals, LLC
11995 Singletree Ln, Suite 500
Eden Praire, MN 55344
Tel: (952) 392-1100
Fax: (952) 935-2757



Moore, Adams W., MD, Radiology
Memorial Hospital Gulfport (Radiology)
4500 13th Street
Gulfport, MS 39501
Tel: (228) 865-3617
Fax: (228) 867-4137



Moore, Omar J., MD, Neurology
Memorial Neurosciences
1340 Broad Avenue, Suite 440
Gulfport, MS 39501
Tel: (228) 867-4855
Fax: (228) 867-4870



Morris, Macon C., MD, Emergency Medicine
Memorial Hospital Gulfport Emergency Department
4500 13th Street.
Gulfport, MS 39502
Tel: (228) 575-2000
Fax: (228) 867-4124

Memorial Medical Staff Members



Moskowitz, Jesse B., MD, General Surgery

Memorial General Surgery
1340 Broad Avenue, Suite 240
Gulfport, MS 39501
Tel: (228) 575-1200
Fax: (228) 575-1205



Motakhaveri, Gholam R., MD, Internal Medicine

Biloxi Internal Medicine Clinic, PA
147 Reynoir Steet
Biloxi, MS 39530
Tel: (228) 374-2051
Fax: (228) 374-5741



Mszyco, Steven M., MD, Radiology

Virtual Radiologic Professionals, LLC
11995 Singletree Ln, Suite 500
Eden Praire, MN 55344
Tel: (952) 392-1100
Fax: (952) 935-2757



Muirhead, Melissa M., MD, Hospitalist

Memorial Hospital Gulfport (Hospitalist)
4500 13th Street
Gulfport, MS 39501
Tel: (228) 867-4396
Fax: (228) 867-5354



Mullen, Paul E., MD, Cardiology

Memorial Physician Clinics Coast Cardiovascular Associates
1391 Broad Avenue, Suite A
Gulfport, MS 39501
Tel: (228) 863-8868
Fax: (228) 863-8956



Mullins, Jonathan B., MD, Radiology

SMB Radiology
14231 Seaway Road Suite 5003
Gulfport, MS 39503
Tel: (228) 864-4392
Fax: (228) 868-7103



Murray, Matthew J., MD, Internal Medicine

Memorial Physicians Clinic
12261 Highway 49 North, Suite 11
Gulfport, MS 39503
Tel: (228) 575-2176
Fax: (228) 575-2177

Memorial Medical Staff Members



Najamuddin, Sadia, DO, Neurology

Memorial Neurosciences
1340 Broad Avenue, Suite 440
Gulfport, MS 39501
Tel: (228) 867-4855
Fax: (228) 867-4870



Nakamoto, Andrew T., MD, Emergency Medicine

Memorial Hospital Gulfport (Emergency)
4500 13th Street
Gulfport, MS 39501
Tel: (228) 575-2000
Fax: (228) 867-4124



Nalluri, Krishna R., MD, Neurology

Memorial Physician Clinics
3434 Bienville Blvd
Ocean Springs, MS 39564
Tel: (228) 575-2180
Fax: (228) 875-1124



Nation, Kelly E., MD, Pediatrics

UMMC Department of Pediatrics
2500 North State St
Jackson, MS 39216
Tel: (601) 984-4027
Fax: (228) 865-3004



Nations, Kelly M., MD, Emergency Medicine

Memorial Hospital Gulfport (Emergency)
4500 13th Street
Gulfport, MS 39501
Tel: (228) 575-2000
Fax: (228) 867-4124



Neher, Timothy J., MD, Radiology

Virtual Radiologic Professionals, LLC
11995 Singletree Ln, Suite 500
Eden Prairie, MN 55344
Tel: (952) 392-1100
Fax: (952) 935-2757



Neiderman, Bret, MD, Radiology

Memorial Hospital Gulfport (Radiology)
4500 13th Street
Gulfport, MS 39501
Tel: (228) 865-3617
Fax: (228) 867-4137

Memorial Medical Staff Members



Nettlow, Darrell, D., MD, Pulmonology

Memorial Hospital Biloxi
150 Reynoir Street
Biloxi, MS 39530
Tel: (228) 432-1571



Nguyen, Ian H., MD, OB/GYN

Memorial Hospital Gulfport Laborists
4500 13th Street
Gulfport, MS 39501
Tel: (228) 865-3263
Fax: (228) 867-5052



Nguyen, Nghia D., DO, Emergency Medicine

Memorial Hospital Gulfport (Emergency)
4500 13th Street
Gulfport, MS 39501
Tel: (228) 575-2000
Fax: (228) 867-4124



Mishra-Nicaud, Vibha M., DO, Oncology

Hematology Oncology Partners (HOPE)
1340 Broad Avenue, Suite 330
Gulfport, MS 39501
Tel: (228) 575-1234
Fax: (228) 867-4828



Nicell, Donald T., MD, Radiology

Virtual Radiologic Professionals, LLC
11995 Singletree Ln, Suite 500
Eden Prairie, MN 55344
Tel: (952) 392-1100
Fax: (952) 935-2757



Noblin, Jeffrey D., MD, Orthopedic Surgery

Bienville Orthopaedic Specialists
6300 E. Lake Blvd., Suite 201
Vancleave, MS 39565
Tel: (228) 230-2663
Fax: (228) 546-3257



Northington, David A., MD, Internal Medicine

Memorial Hospital Gulfport (Hospitalist)
4500 13th Street
Gulfport, MS 39501
Tel: (228) 867-4396
Fax: (228) 867-5354

Memorial Medical Staff Members



O'Gorman, Joseph, D., DO, Vascular Surgery
Gulf Coast Vascular Care
14215 Cook Road
Biloxi, MS 39532
Tel: (228) 207-0810
Fax: (228) 333-0440



Oh, Richard J., MD, Radiology
Virtual Radiologic Professionals, LLC
11995 Singletree Ln, Suite 500
Eden Prairie, MN 55344
Tel: (952) 595-1100
Fax: (952) 935-2757



Olaveson, Hans, DO, Emergency Medicine
Memorial Hospital Gulfport (Emergency)
4500 13th Street
Gulfport, MS 39501
Tel: (228) 575-2000
Fax: (228) 867-4124



Osei, Frank, MD, Pediatric Cardiology
Pediatric Cardiology - UMMC
2500 N State St
Jackson, MS 39216
Tel: (601) 815-1432
Fax: (601) 984-5283



Ouimet, Christopher A., MD, Emergency Medicine
Memorial Hospital Gulfport (Emergency)
4500 13th Street
Gulfport, MS 39501
Tel: (228) 575-2000
Fax: (228) 867-4124



Overmyer, Kent T., MD, Anesthesiology
Coastal Chronic Pain Service PLLC
3017 13th Street
Gulfport, MS 39501
Tel: (228) 831-0050
Fax: (228) 831-1121



Owens, David C., MD, Urology
Urology Associates
1153 Ocean Springs Road
Ocean Springs, MS 39564
Tel: (228) 819-8586

Memorial Medical Staff Members



Paddock, Richard J., MD, Urology
Memorial Coast Urology Center
1340 Broad Avenue, Suite 210
Gulfport, MS 39501
Tel: (228) 575-1600
Fax: (228) 575-1603



Pakron, Frederick J., MD, Pulmonary Disease
Memorial Gulf Coast Pulmonary Consultants
9424 Three Rivers Road, Suite A
Gulfport, MS 39503
Tel: (228) 539-3356
Fax: (228) 206-3270



Pande, Leena P., MD, Radiology
Memorial Hospital Gulfport (Radiology)
4500 13th Street
Gulfport, MS 39501
Tel: (228) 865-3617
Fax: (228) 867-4137



Pande, Purushottam V., MD, Oncology
Memorial Medical Oncology
1340 Broad Avenue, Suite 270
Gulfport, MS 39501
Tel: (228) 575-1234
Fax: (228) 867-4866



Pappas, John F., MD, OB/GYN
Memorial Woman's Clinic
4577 13th Street
Gulfport, MS 39501
Tel: (228) 864-2752
Fax: (228) 214-4206



Parker, Renita S., DPM, Podiatrist
Memorial Physician Clinics
147 Reynoir Street, Suite 204
Biloxi, MS 39530
Tel: (228) 822-6320
Fax: (228) 207-2102



Passarelli, William O., MD, Cardiology
Southern Mississippi Heart Center, P.A.
4300 Hospital St., Suite 102
Pascagoula, MS 39581
Tel: (228) 872-4040 x16
Fax: (228) 875-2387

Memorial Medical Staff Members



Patel, Indrajit J., MD, Internal Medicine

Memorial Hospital Gulfport (Hospitalist)
4500 13th Street
Gulfport, MS 39501
Tel: (228) 867-4396
Fax: (228) 867-5354



Pates, Jason A., MD, Maternal Fetal Medicine

Ob Hospitalist Group
777 Lowndes Hill Rd., Building 1
Greenville, SC 29607
Tel: (800) 967-2289
Fax: (864) 627-9920



Patino, Gregory, MD, Emergency Medicine

Memorial Hospital Gulfport (Emergency)
4500 13th Street
Gulfport, MS 39501
Tel: (228) 575-2000
Fax: (228) 867-4124



Patten, Patrick P., MD, Radiology

Memorial Hospital Gulfport (Radiology)
4500 13th Street
Gulfport, MS 39501
Tel: (228) 865-3617
Fax: (228) 867-4137



Pavlov, Anna K., MD, Plastic Surgery

Memorial Plastic Surgery
1107 Cowan Rd
Gulfport, MS 39503
Tel: (228) 822-6296
Fax: (228) 865-3183



Payment, Michael F., MD, Cardiology

Memorial Physician Clinics - Gulf Coast Heart
4533 13th Street
Gulfport, MS 39501
Tel: (228) 214-9640
Fax: (228) 214-9642



Perkins, Frank, MD, Psychiatry

Precise Research Centers
3531 Lakeland Dr., Suite 1060
Flowood, MS 39232
Tel: (601) 420-5812

Memorial Medical Staff Members



Peterson, Adam M., DO, Urology

Urology Associates, LLC
15190 Community Rd., Suite 300
Gulfport, MS 39503
Tel: (228) 831-9699
Fax: (228) 831-3908



Peterson, Andrew J., DO, Internal Medicine

Biloxi Internal Medicine Clinic, PA
147 Reynoir Street, Suite 101
Biloxi, MS 39530
Tel: (228) 374-2051
Fax: (228) 374-5741



Phillips, Margaret E., MD, Ophthalmic Plastic & Reconstructive Surgery

Restore OculoPlastics Gulf Coast
8980 Lorraine Rd
Gulfport 39503
Tel: (228) 231-9477
Fax: (228) 900-0373



Pisciotta, Vincent J., MD, Otolaryngology

Medical Group
15190 Community Rd., Suite 100
Gulfport, MS 39503
Tel: 539-3824
Fax: 385-7610



Planchard, Jeffrey A., MD, Anesthesiology

Somnifera BEST
14050 Dedeaux Road
Gulfport, MS 39503
Tel: (228) 702-2000
Fax: (228) 702-2018



Poirier, Sarah E., MD, Orthopedic Surgery

Department of Orthopedic Surgery
301 Fisher Street
81st MSGS/SGCQO
Keesler AFB, MS 39534
Tel: (228) 377-6725



Postler, Mark A., MD, Anesthesiology

Memorial Hospital (Anesthesia)
4500 13th Street
Gulfport, MS 39501
Tel: (228) 865-3281
Fax: (228) 867-5117

Memorial Medical Staff Members



Pratt, Alan G., MD, Radiology
Virtual Radiologic Professionals, LLC
11995 Singletree Ln, Suite 500
Eden Prairie, MN 55344
Tel: (952) 392-1100
Fax: (952) 935-2757



Pressley-Wallace, Angela, MD, Pediatric Gastroenterology
Digestive Health Center
3890 Bienville Blvd
Ocean Springs, MS 39564
Tel: (228) 872-6291
Fax: (228) 875-3385



Pridjian, Gabriella C., MD, Maternal Fetal Medicine
Tulane University Medical Center
1430 Tulane Ave
Department of Obstetrics & Gynecology
New Orleans, LA 70112
Tel: (504) 988-2145
Fax: (504) 988-2943



Raff, John B., MD, Orthopedic Surgery
Memorial Orthopaedic Surgeons
1397 Broad Avenue, Suite A
Gulfport, MS 39501
Tel: (228) 867-5012
Fax: (228) 575-1885



Rao, Hari A., MD, Internal Medicine
Memorial Hospital Gulfport (Hospitalist)
4500 13th Street
Gulfport, MS 39501
Tel: (228) 867-4396
Fax: (228) 867-5354



Rector, Jason S., DMD, Dentist
Pediatric Dental Specialties
2323 Government Street
Ocean Springs, MS 39564
Tel: (228) 447-4135
Fax: (228) 447-4133



Reed, Haylie, MD, Vascular Surgery
Memorial Vascular Surgery Consultants
1340 Broad Avenue, Suite 220
Gulfport, MS 39501
Tel: (228) 575-1300
Fax: (228) 867-6423

Memorial Medical Staff Members



Reehl Jr., David E., Anesthesiology

Somnifera BEST
14050 Dedeaux Road
Gulfport, MS 39503
Tel: (228) 702-2000
Fax: (228) 702-2018



Reeves, David L., MD, Pediatrics

Memorial Children's Clinic
20091 Pineville Rd
Long Beach, MS 39560
Tel: (228) 868-3684
Fax: (228) 868-3795



Reeves, Vonda G., MD, Gastroenterology

Memorial Digestive Health Center
3890 Bienville Blvd.
Ocean Springs, MS 39564
Tel: (228) 872-6291
Fax: (228) 875-3385



Regan, Cornelius E., MD, Ophthalmology

Retina Specialists of Mississippi
953 Tommy Munro Drive
Biloxi, MS 39532
Tel: (228) 232-0125
Fax: (228) 232-1212



Reid, Ashley, N., MD, OB/GYN

Keesler Medical Center
301 Fisher Street
Keesler AFB, MS 39534
Tel: (228) 376-3779



Rhie, Ryan Y., MD, General Surgery

Keesler Medical Center
301 Fisher Street
Keesler AFB, MS 39534
Tel: (228) 376-3778



Remley, David S., DMD, Oral & Maxillofacial Surgery

South MS Oral Surgery and Implant Center, PLLC
12231 Bernard Pkwy
Gulfport, MS 39503-5086
Tel: (601) 264-7611
Fax: (601) 268-0693

Memorial Medical Staff Members



Richardson, Daniel Q., MD, Plastic Surgery

Aesthetic Surgery Center
390 Courthouse Rd
Gulfport, MS 39507
Tel: (228) 897-1400
Fax: (228) 897-1500



Richter, Kayla C., MD, Pediatrics

Memorial Hospital Gulfport (Pediatric Hospitalist)
4500 13th Street
Gulfport, MS 39501
Tel: (228) 865-3386



Rikabi, Khaled A., MD, Infectious Disease

Khaled Rikabi, MD
1104 Broad Avenue
Gulfport, MS 39501
Tel: 868-5555



Rimmer, David M., MD, General Surgery

Memorial General Surgery-Bay St. Louis
833 Highway 90, Suite 1
Bay St. Louis, MS 39520
Tel: (228) 575-2920
Fax: (228) 466-4677



Rizk, Antoine B., MD, Cardiology

Memorial Hospital Gulfport
1391 Broad Avenue
Gulfport, Ms 39501
Tel: (228) 863-8868
Fax: (228) 863-8956



Roberson, Gary A., MD, Psychiatry

MDB Behavioral Health Services
1896 Hwy 471
Brandon, MS 39047
Tel: (601) 655-4162
Fax: (855) 830-3484



Roberts, David F., MD

Memorial Hospital Gulfport
4500 Thirteenth Street
Gulfport, MS 39501
Tel: (228) 822-6006
Fax: (855) 255-3626

Memorial Medical Staff Members



Robinson, Martha, MD, Interventional Neuroradiology

Tulane Center for Clinical Neurosciences

131 S. Robertson Street

New Orleans, LA 70112

Tel: (504) 988-5565

Fax: (504) 988-5793



Rodriguez, Ramon, F., MD, Orthopedic Surgery

Bienville Orthopaedic Specialists

1720-A Medical Park Dr, Suite 220

Biloxi, MS 39532

Tel: (228) 392-9355

Fax: (228) 392-1781



Rose, Rebecca, MD, Family Medicine

Memorial Physician Clinics at Cedar Lake

1756 Popp's Ferry Rd

Biloxi, MS 39532

Tel: (228) 865-3200

Fax: (228) 575-1660



Ross, Diane E., MD, Neurology

Memorial Physician Clinics Neurology Pass Road

749 Oakleigh Avenue

Gulfport, MS 39507

Tel: (228) 867-5277

Fax: (228) 896-3314



Roth, Jason K., MD, Radiology

Virtual Radiologic Professionals, LLC

11995 Singletree Ln, STE 500

Eden Prairie, MN 55344

Tel: (952) 392-1100

Fax: (952) 935-2757



Roussel, Jordan M., MD, Gastroenterology

Memorial Gastroenterology Center

4500 West Railroad Street

Gulfport, MS 39501

Tel: (228) 863-8836

Fax: (228) 864-4417



Rushing, Mark W., MD, Pediatrics

University of MS Medical Center

Dept of Pediatrics

2500 North State Street

Jackson, MS 39216

Tel: (601) 984-5200

Memorial Medical Staff Members



Saelens, James R., MD, Maternal Fetal Medicine

Obstetrics-Maternal Fetal Medicine
301 Fisher Street
Keesler AFB, MS 39534
Tel: 376-5781



Safley, Jessica L., MD, Anesthesiology

Memorial Hospital (Anesthesia)
4500 13th Street
Gulfport, MS 39501
Tel: (228) 865-3281
Fax: (228) 867-5117



Safley, Matthew L., DO, Pathology

Memorial Hospital Gulfport (Pathology)
4500 13th Street REET
Gulfport, MS 39501
Tel: (228) 575-2318
Fax: (228) 575-2380



Salerian, Justin A., MD, Neurology

University Medical Center Neurology Clinic
2003 Tulane Avenue
New Orleans, LA 70112
Tel: (504) 962-6210
Fax: (504) 702-5745



Salloum, George T., MD, Orthopedic Surgery

Bienville Orthopaedic Specialists
15476 Dedeaux Rd, Suite B
Gulfport, MS 39503
Tel: 679-3001
Fax: 679-3039



Samel, Michael A., MD, Family Medicine

Memorial Hospital Gulfport (Hospitalist)
4500 13th Street
Gulfport, MS 39501
Tel: (228) 867-4396
Fax: (228) 867-5354



Samms, Charles G., MD, Pediatrics

Children's of Mississippi
12259 Hwy 49, Suite C
Gulfport, MS 39503
Tel: (228) 396-3179
Fax: 575-2822

Memorial Medical Staff Members



Sampong, Claudia M., DO, OB/GYN

Gulfport OBGYN Clinic
4502 Old Pass Road
Gulfport, MS 39501
Tel: (228) 863-9977
Fax: (228) 863-9912



Sams, Bradley C., MD, OB/GYN

Bradley Carnell Sams, MD, LLC
1001 N. Halstead Road
Ocean Springs, MS 39564
Tel: (228) 818-0416
Fax: (228) 818-4932



Sanders, Morgan M., DO, Infectious Disease

Memorial Infectious Disease
1340 Broad Ave., Suite 300
Gulfport, MS 39503
Tel: (228) 575-2700
Fax: (228) 575-2710



Sanford, Laura A., DO, Family Medicine

MPC - Cowan Rd Multispecialty
1107 Cowan Rd
Gulfport, MS 39507
Tel: (228) 822-6470
Fax: (228) 897-9992



Sangani, Bharat H., MD, Internal Medicine/Cardiology

Memorial Orange Grove Medical Specialties
15286 Community Road
Gulfport, MS 39503
Tel: (228) 822-6022
Fax: (228) 832-5195



Savadkar, Shivraj V., MD, Pediatrics

UMMC Department of Pediatrics
2500 North State St.
Jackson, MS 39216
Tel: (601) 984-4027
Fax: (228) 865-3004



Schepens, Amy T., MD, Pediatrics

Children's of Mississippi Bridgewater
8950 Lorraine Road, Suite A
Gulfport, MS 39503
Tel: (228) 396-3238
Fax: (601) 496-8103

Memorial Medical Staff Members



Schepens, Steven M., MD, Family Medicine

Memorial Southern Coast Family Medicine
394 Courthouse Rd, Suite A
Gulfport, MS 39507
Tel: (228) 896-4417
Fax: (228) 604-0121



Schlosser, Charles E., MD, Pain Management

Memorial Pmr & Rehabilitation Services
1340 Broad Avenue, Suite 450
Gulfport, Ms 39501
Tel: (228) 867-5006
Fax: (228) 867-5079



Scott, Kerry M., DO, Family Medicine

MPC Family Practice Medical Park
1759 Medical Park Drive
Biloxi, MS 39532
Tel: (228) 822-6030
Fax: (228) 207-1378



Searcey, Brett K., MD, Radiology

Virtual Radiologic Professionals, LLC
11995 Singletree Ln, Suite 500
Eden Prairie, MN 55344
Tel: (952) 392-1100
Fax: (952) 935-2757



Segarra, Jay T., MD, Pulmonary Disease

Memorial Gulf Coast Pulmonary Consultants
9424 Three Rivers Road, Suite A
Gulfport, MS 39503
Tel: (228) 539-3356
Fax: (228) 206-3270



Segel, Kenneth H., MD, Radiology

Virtual Radiologic Professionals, LLC
11995 Singletree Ln, Suite 500
Eden Prairie, MN 55344
Tel: (952) 392-1100
Fax: (952) 935-2757



Seicshnaydre, Michael A., MD, Otolaryngology

The Center for Head & Neck Medicine & Surgery
4300 15th Street Suite B
Gulfport, MS 39501
Tel: 864-0828
Fax: 864-0191

Memorial Medical Staff Members



Seigerman, Jedd A., MD, Nephrology
Memorial South Mississippi Nephrology
4300 B West Railroad Street
Gulfport, MS 39501
Tel: 863-7393
Fax: 868-6643



Shafique, Hassan, MD, Internal Medicine
Memorial Hospital Gulfport (Hospitalist)
4500 13th Street
Gulfport, MS 39501
Tel: (228) 867-4396
Fax: (228) 867-5354



Shah, Manojkumar P., MD, Cardiology
Memorial Phys Clinic Coast Cardiology Center
1203 Broad Avenue
Gulfport, MS 39501
Tel: (228) 868-5555
Fax: (228) 574-2001



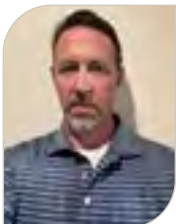
Shahin, George M., MD, Oncology
Memorial Medical Oncology
1340 Broad Avenue, Suite 270
Gulfport, MS 39501
Tel: (228) 575-1234
Fax: (228) 867-4866



Shannon, Paul J., MD, Urology
Memorial Coast Urology Center
1340 Broad Avenue, Suite 210
Gulfport, MS 39501
Tel: (228) 575-1600
Fax: (228) 575-1603



Sharma, Manika, MD, Neonatology
Southern MS Neonatology
1108 Oakleigh Drive
Hattiesburg, MS 39402
Tel: (601) 288-3440
Fax: (601) 288-3406



Shipman, Jason I., MD, Radiology
SMB Radiology
14231 Seaway Road Suite 5003
Gulfport, MS 39503
Tel: (228) 864-4392
Fax: (228) 868-7103

Memorial Medical Staff Members



Shoaf, Guy M., MD, Urology

Urology Associates
1153 Ocean Springs Road
Ocean Springs, MS 39564
Tel: (228) 819-8586
Fax: (251) 433-1917



Shores, Jennifer, MD, Pediatric Cardiology

Pediatric Cardiology - UMMC
2500 N State St
Jackson, MS 39216
Tel: (601) 815-1432
Fax: (601) 984-5283



Siddiqui, Adeel, MD, Radiology

Virtual Radiologic Professionals, LLC
11995 Singletree Ln., Suite 500
Eden Prairie, MN 55344
Tel: (952) 392-1100
Fax: (952) 935-2757



Simeone, Francesco, MD, Critical Care Medicine

Memorial Hospital Biloxi
150 Reynoir Street
Biloxi, MS 39530
Tel: (228) 432-1571



Simone, Simone J., PhD, Clinical Psychology

Simone & Associates
10585 Three Rivers Road, Suite C
Gulfport, MS 39503
Tel: (228) 604-0099
Fax: (228) 604-2001



Simpson, Raychel B., MD, Emergency Medicine

Memorial Hospital Gulfport (Emergency)
4500 13th Street
Gulfport, MS 39501
Tel: (228) 575-2000



Simpson, Samuel, MD, Pediatrics

UMC Gulf Coast Pediatrics
833 Highway 90, Suite 1
Bay St. Louis, MS 39520
Tel: (228) 396-3141
Fax: (601) 496-8100

Memorial Medical Staff Members



Simpson, Scott, MD, Pediatric Cardiology

Pediatric Cardiology - UMMC

2500 N State St

Jackson, MS 39216

Tel: (601) 815-1432

Fax: (601) 984-5283



Skelton, Timothy B., MD, Internal Medicine

Memorial Internal Medicine-Acadian Plaza

12261 Hwy 49 North, Suite 9

Gulfport, MS 39503

Tel: (228) 822-6340

Fax: (228) 206-3741



Smelley, Christopher L., DO, Emergency Medicine

Memorial Hospital Biloxi Emergency

150 Reynoir Street

Biloxi, MS 39530

Tel: (228) 432-1571



Smith, Benjamin P., MD, Internal Medicine

Memorial Hospital Gulfport (Hospitalist)

4500 13th Street

Gulfport, MS 39501

Tel: (228) 867-4396

Fax: (228) 867-5354



Smith, Grace E., MD, Hospitalist

Memorial Hospital Gulfport (Hospitalist)

4500 13th Street

Gulfport, MS 39501

Tel: (228) 867-4396

Fax: (228) 867-5354



Smith, Jason V., MD, Otolaryngology

3017 13th Street

Gulfport, MS 39501

Tel: (228) 863-6617

Fax: (228) 863-1747



Smith, Terry C., MD, Neurosurgery

Medical Group

1009 Tommy Munro Dr., Suite B

Biloxi, MS 39532

Tel: (228) 388-1823

Fax: (228) 385-5336

Memorial Medical Staff Members



Smith, Thomas P., MD, Orthopedic Surgery
Memorial Physician Clinics Broad Ave. Orthopedics
1397 Broad Ave.
Gulfport, MS 39501
Tel: (228) 575-1945
Fax: (228) 575-1964



Sohal, Ravinder, MD, Radiology
Virtual Radiologic Professionals, LLC
11995 Singletree Ln, Suite 500
Eden Prairie, MN 55344
Tel: (952) 392-1100
Fax: (952) 935-2757



Spataro, Michael T., MD, Pathology
Memorial Hospital Gulfport (Pathology)
4500 13th Street
Gulfport, MS 39501
Tel: (228) 575-2318
Fax: (228) 575-2380



Spear, Meagan J., MD, Emergency Medicine
Memorial Hospital Gulfport (Emergency)
4500 13th Street
Gulfport, MS 39501
Tel: (228) 575-2000
Fax: (228) 867-4124



Spencer Jr., David L., MD, Urology
Urology Associates
1153 Ocean Springs Road
Ocean Springs, MS 39564
Tel: (228) 819-8586



Staib, Neil E., MD, Radiology
Virtual Radiologic Professionals, LLC
11995 Singletree Ln, Suite 500
Eden Prairie, MN 55344
Tel: (952) 392-1100
Fax: (952) 935-2757



Stanich, Charles, MD, Internal Medicine
Memorial Hospital Gulfport (Hospitalist)
4500 13th Street
Gulfport, MS 39501
Tel: (228) 867-4396
Fax: (228) 867-5354

Memorial Medical Staff Members



Stevens, Clayton A., MD, Ophthalmology

2541 Pass Road, Suite G
Biloxi, MS 39531
Tel: (228) 285-7474
Fax: (228) 285-0233



Stewart, Kerry D., MD, Neonatology

Memorial Hospital Gulfport (Neonatal Unit)
4500 13th Street
Gulfport, MS 39501
Tel: (228) 865-3583
Fax: (228) 867-5398



St-Hilaire, Hugo, MD, Plastic Surgery

Children's Hospital New Orleans
200 Henry Clay Ave
New Orleans, LA 70118
Tel: (504) 412-1240
Fax: 504.568.4633



Stonnington, Michael J., MD, Orthopedic Surgery

Memorial Physician Clinics Broad Ave Orthopedics
1397 Broad Ave
Gulfport, MS 39501
Tel: (228) 575-1945
Fax: (228) 575-1964



Stovall, Patrick, DO, Internal Medicine

Memorial Hospital Gulfport (Hospitalist)
4500 13th Street
Gulfport, MS 39501
Tel: (228) 867-4396
Fax: (228) 867-5354



Strassberg, Emmie R., DO, Maternal Fetal Medicine

Ob Hospitalist Group
777 Lowndes Hill Rd., Building 1
Greenville, SC 2907
Tel: (800) 967-2289
Fax: (864) 627-9920



Subedi, Rogin, MD, Cardiology

Southern Mississippi Heart Center
15190 Community Road, Suite 260
Gulfport, MS 39503
Tel: (228) 575-8020

Memorial Medical Staff Members



Summerlin, Holly G., MD, OB/GYN
Memorial Hospital Gulfport (Laborists)
4500 13th Street
Gulfport, MS 39501
Tel: (228) 865-3263
Fax: (228) 867-5052



Sumrall, Stephen R., MD, Emergency Medicine
Memorial Hospital Gulfport (Emergency)
4500 13th Street
Gulfport, MS 39501
Tel: (228) 575-2000
Fax: (228) 867-4124



Surowiec, Walter J., DO, Cardiothoracic Surgery
Memorial Cardiothoracic Surgery Clinic
1340 Broad Ave #320
Gulfport, MS 39501
Tel: (228) 575-1500
Fax: (228) 575-1528



Tamboli, Kaizad P., MD, Internal Medicine
Memorial Magnolia Grove Healthcare
4333 15th St., Suite A
Gulfport, MS 39501
Tel: (228) 863-4000
Fax: (228) 863-4003



Tamton, Hyder, DO, Neurology
Tulane Center for Clinical Neurosciences
131 S. Robertson Street, Suite 1300
New Orleans, LA 70112
Tel: (504) 988-5565
Fax: (504) 988-5793



Taormina, David P., MD, Orthopedics
Bienville Orthopaedic Specialists
6300 East Lake Blvd., Suite 201
Vancleave, MS 39565
Tel: (228) 230-2663
Fax: (228) 206-1130



Tasan, Ediz, MD, Interventional Cardiology
Southern Mississippi Heart Center, P.A.
3704 Bienville Blvd., Suite B
Ocean Springs, MS 39564
Tel: (228) 872-4040
Fax: (228) 875-2387

Memorial Medical Staff Members



Tasan, Laura A., MD, Pediatric Rheumatology

Children's of Mississippi
University of Mississippi Medical Center
1721 Medical Park Drive Suite 101
Biloxi, MS 39532
Tel: (228) 392-7046



Tayara, Wakkas, MD, Cardiology

Memorial Interventional Cardiology
1340 Broad Avenue, Suite 320
Gulfport, MS 39501
Tel: (228) 575-1500
Fax: (228) 575-1528



Taylor, David P., MD, OB/GYN

Gulfport OB & Gynecological Clinic, PA
4502 Old Pass Rd
Gulfport, MS 39501
Tel: (228) 863-9977
Fax: (228) 863-9912



Taylor, Jr., Eddie L., MD, Radiology

Virtual Radiologic Professionals, LLC
11995 Singletree Ln, Suite 500
Eden Prairie, MN 55344
Tel: (952) 392-1100
Fax: (952) 935-2757



Thames, John W., DO, Family Medicine

1428 Azalea Dr South
Wiggins, MS 39577
Tel: (601) 928-9674
Fax: (601) 928-9676



Thomas Jr., George P., MD, PhD, Neurology

Neuromonitoring Associates
550 N Central Expy Unit 2586
McKinney, TX 75070
Tel: (855) 864-4322



Thomas, Joshua W., MD, Emergency Medicine

Memorial Hospital Gulfport (Emergency)
4500 13th Street
Gulfport, MS 39501
Tel: (228) 575-2000
Fax: (228) 867-4124

Memorial Medical Staff Members



Thomasson Jr., James D., MD, Radiology

Neurocare of the South
648 Crestwood Blvd.
Covington, LA 70433
Tel: (985) 805-2555
Fax: (985) 400-5303



Thriffley, James C., MD, Orthopedic Surgery

Jim Thriffley, MD, PLLC
1639 East Pass Rd
Gulfport, MS 39507
Tel: (205) 533-4333
Fax: (228) 604-2255



Thurber, George M., MD, Ophthalmology

The Center for Eye Care
3420 Bienville Boulevard
Ocean Springs, MS 39564
Tel: (228) 875-3937
Fax: (228) 875-3930



Tomajian, Samir A., MD, Pain Management

Memorial Pain Medicine and Rehabilitation Services
1340 Broad Avenue, Suite 450
Gulfport, MS 39501
Tel: (228) 867-5006
Fax: (228) 867-5079



Tonismae, Tiffany R., MD, Maternal Fetal Medicine

Ob Hospitalist Group
777 Lowndes Hill Rd., Building 1
Greenville, SC 29607
Tel: (800) 967-228
Fax: (864) 627-9920



Trus, Joanna M., MD, OB/GYN

Memorial Woman's Clinic
4577 13th Street
Gulfport, MS 39501
Tel: (228) 864-2752
Fax: (228) 214-4206



Tucker, Joel A., MD, Orthopedic Surgery

Bienville Orthopaedic Specialists, LLC
1720-A Med Park Dr, Suite 220
Biloxi, MS 39532
Tel: (228) 230-2663
Fax: (228) 392-1781

Memorial Medical Staff Members



Tuli, Pamela J., MD, Hematology & Oncology

Memorial Medical Oncology
1340 Broad Avenue, Suite 270
Gulfport, MS 39501
Tel: (228) 575-1234
Fax: (228) 867-4866



Tullos, Bobby W., MD, Pulmonary Disease

Memorial Heart and Lung Clinic
1340 Broad Avenue, Suite 410
Gulfport, MS 39501
Tel: (228) 575-1775
Fax: (228) 575-1770



Tyler, Joshua A., MD, Colon & Rectal Surgery

Memorial Biloxi Colorectal Surgery
147 Reynoir Street, Suite 200
Biloxi, MS 39530
Tel: (228) 436-1273
Fax: (228) 436-1267



Ulmer, April L., MD, Pediatric Gastroenterology

Kids and Tummies
401 Cowan Rd, Suite B
Gulfport, MS 39507
Tel: (228) 222-4072
Fax: (228) 215-1205



Vaderrama, Carmenza M., MD, Family Medicine

Memorial Broad Ave. Family Practice
1202 Broad Ave.
Gulfport, MS 39501
Tel: (228) 822-9360
Fax: (228) 822-9361



Vinson, Jared L., Internal Medicine

Memorial Hospital Gulfport (Hospitalist)
4500 13th Street
Gulfport, MS 39501
Tel: (228) 867-4396
Fax: (228) 867-5354



Vouters, Lee, MD, Neurology

Memorial Neuroscience
1340 Broad Avenue, Suite 440
Gulfport, MS 39501
Tel: (228) 867-4855
Fax: (228) 867-4870

Memorial Medical Staff Members



Vu, Johnathan K., MD, Internal Medicine

Memorial Hospital Gulfport (Hospitalist)
4500 13th Street
Gulfport, MS 39501
Tel: (228) 867-4396
Fax: (228) 867-53543.



Vu, Viet H., MD, Radiology

Memorial Hospital Gulfport (Radiology)
4500 13th Street
Gulfport, MS 39501
Tel: (228) 865-3617
Fax: (228) 867-4137



Wagner, Lloyd D., MD, Radiology

Radiology Reports Online
2200 S. Main Street, Suite 210
Lombard, IL 60148
Tel: (630) 787-3423



Waldrup, Max A., MD, Emergency Medicine

Memorial Hospital Gulfport Emergency Department
4500 13th Street
Gulfport, MS 39501
Tel: (228) 575-2000
Fax: (228) 867-4124



Waldrup, Rebecca A., DO, Emergency Medicine

Memorial Hospital Gulfport Emergency Department
4500 13th Street
Gulfport, MS 39501
Tel: (228) 575-2000
Fax: (228) 867-4124



Walker, Courtney, PhD, Clinical Psychology

University of Mississippi Medical Center
2500 North State Street
Jackson, MS 39216
Tel: (601) 815-2005



Wall, Allison P., MD, Oncology

Memorial Medical Oncology
1340 Broad Avenue, Suite 330
Gulfport, MS 39501
Tel: (228) 575-1234
Fax: (228) 867-4828

Memorial Medical Staff Members



Wang, Arthur, MD, Neurosurgery
Tulane Center for Clinical Neurosciences
131 S. Robertson Street
New Orleans, LA 70112
Tel: (504) 988-5565
Fax: (504) 988-5793



Wanna, Bassam G., MD, Cardiac Electrophysiology
Tulane University - Cardiac Electrophysiology
1430 Tulane Avenue, #8548
New Orleans, LA 70112
Tel: (504) 988-1774
Fax: (504) 988-4237



Ward, George L., MD, Emergency Medicine
Memorial Long Beach Walk-In
5120 Beatline Rd, Suite B
Long Beach, MS 39560
Tel: (228) 575-2188
Fax: (228) 868-4293



Ware, Alisha H., MD, OB/GYN
Memorial Woman's Clinic
2781 CT Switzer Dr., Suite 306
Biloxi, MS 39531
Tel: Office (228) 822-6328
Fax: (228) 207-3842



Ware, Paul D., MD, General Surgery
Memorial General Surgery
1340 Broad Ave, Suite 240
Gulfport, MS 39501
Tel: (228) 575-1200
Fax: (228) 575-1205



Watson, Benjamin M., MD, Colon & Rectal Surgery
Memorial Biloxi Colorectal Surgery
147 Reynoir Street, Suite 200
Biloxi, MS 39530
Tel: (228) 436-1273
Fax: (228) 436-1267



Watts, Joel, MD, Internal Medicine
Memorial Hospital Gulfport (Hospitalist)
4500 13th Street
Gulfport, MS 39501
Tel: (228) 867-4396
Fax: (228) 867-5354

Memorial Medical Staff Members



Waxman, Erna, MD, OB/GYN

Memorial Hospital Gulfport Laborists
4500 13th Street
Gulfport, MS 39501
Tel: (228) 865-3263
Fax: (228) 867-5052



Weber, Drew S., MD, Emergency Medicine

Memorial Hospital Gulfport Emergency Department
4500 13th Street
Gulfport, MS 39501
Tel: (228) 575-2000
Fax: (228) 867-4124



Webster, Travis, MD, Family Medicine

Memorial GME-Courthouse Family Practice
371 Courthouse Road
Gulfport, MS 39507
Tel: (228) 822-6624
Fax: (228) 265-5408



Weir, David L., MD, Neurology

Neurologic Specialty Consulting Services
802 East Farrel Road
Lafayette, LA 70508
Tel: (337) 504-4039
Fax: (337) 504-4032



Westbrook, Howard G., MD, Family Medicine

MPC Primary Care & Multispecialty Wiggins
1428 Azalea Drive South
Wiggins, MS 39577
Tel: (601) 928-9674
Fax: (601) 928-9676



Weston, Stuart R., MD, Critical Care Medicine

Memorial Biloxi
150 Reynoir Street
Biloxi, MS 39530
Tel: (228) 432-1571



Wetzel, Raun J., MD, Radiology

Memorial Hospital Gulfport (Radiology)
4500 13th Street
Gulfport, MS 39501
Tel: (228) 865-3617
Fax: (228) 867-4137

Memorial Medical Staff Members



White, Clinton B., MD, Neonatology
Memorial Hospital Gulfport (Neonatal Unit)
4500 13th Street
Gulfport, MS 39501
Tel: (228) 865-3583
Fax: (228) 867-5398
850-0457



White, Paige C., MD, Urology
The Urology Clinic
14231 Seaway Rd, Suite 6000
Gulfport, MS 39503
Tel: (228) 254-1103
Fax: (228) 206-2324



Williams, Douglas C., MD, Internal Medicine
Memorial Orange Grove Medical Specialties
15286 Community Road
Gulfport, MS 39503
Tel: (228) 822-6022
Fax: (228) 832-6320



Willis, Edward R., MD, Otolaryngology
Edward R. Willis, M.D.
100 Drinkwater
PO Box 2697
Bay St. Louis, MS 39521
Tel: (228) 467-5121
Fax: (228) 467-0208



Wilson, Charles J., MD, Otolaryngology
Bay Area ENT
1720 Medical Park Dr. Suite100
Biloxi, MS 39562
Tel: (228) 392-9090
Fax: 875-8296



Wilson, Jason, OD, Optometrist
Precision Vision
202 East Railroad Street
Long Beach, MS 39560
Tel: (228) 868-2020
Fax: (228) 863-2695



Wilson, Lucas H., MD, Pediatric Cardiology
Pediatric Cardiology - UMMC
2500 N State Street
Jackson, MS 39216
Tel: (601) 815-1432
Fax: (601) 984-5283

Memorial Medical Staff Members



Wineski, Robert E., MD, Otolaryngology

Coastal ENT Associates
970 Tommy Munro Drive, Suite B
Biloxi, MS 39532
Tel: (228) 388-4585
Fax: (228) 385-7610



Wingfield, Angela B., MD, Dermatology

The Dermatology Clinic, PLLC
11295 East Taylor Road
Gulfport, MS 39503
Tel: (228) 864-3300
Fax: (228) 864-3333



Wolfson, Eric H., MD, Neurosurgery

Memorial Neurosurgery
1340 Broad Avenue, Suite 440
Gulfport, MS 39501
Tel: (228) 867-4855
Fax: (228) 867-4857



Wu, Shawn X., MD, Physical Medicine & Rehabilitation

Physical Medicine & Rehabilitation
Shawn Wu, MD
14986 Angela Dr
Gulfport, MS 39503
Tel: (228) 357-5464
Fax: (877) 563-0603



Wurm, William V., MD, Pediatrics

Pediatric Associates
3631 Bienville Boulevard
Ocean Springs, MS 39564-5702
Tel: (228) 818-0585
Fax: (228) 818-0588



Wyatt, Christopher H., MD, Anesthesiology

Memorial Hospital (Anesthesiology)
4500 Thirteenth St.
Gulfport, MS 39501
Tel: (228) 865-3281
Fax: (228) 867-5117



Wyble, Eric J., MD, Plastic Surgery

Gulf Coast Aesthetic Center
1133 45th Avenue
Gulfport, MS 39501
Tel: (228) 865-7299
Fax: (228) 822-2967

Memorial Medical Staff Members



Youngblood, Gaela S., PhD, Clinical Psychology

Memorial Medical Oncology
1340 Broad Avenue, Suite 270
Gulfport, MS 39501
Tel: (228) 575-1234
Fax: (228) 867-4866



Zakaras, Patsy H., PhD, Clinical Psychology

Drs. Patsy Zakaras, PhD & Michael Zakaras, PhD
15465 Oak Lane, Suite 100-D
Gulfport, MS 39503
Tel: (228) 832-5041
Fax: (228) 832-5820



Zakkak, Thomas B., DDS, Oral & Maxillofacial Surgery

Gulf Coast Oral & Maxillofacial Surgeons
1760 Medical Park Drive
Biloxi, MS 39532
Tel: (228) 388-5925
Fax: (228) 388-8153



Zayed, Mahmoud H., MD, Cardiology

Southern Mississippi Heart Center, P.A.
3704 Bienville Blvd., Suite B
Ocean Springs, MS 39564
Tel: (228) 872-4040
Fax: (228) 875-2387



Zelinka, Peter B., MD, Radiology

Virtual Radiologic Professionals, LLC
11995 Singletree Ln, Suite 500
Eden Prairie, MN 55344
Tel: (952) 392-1100
Fax: (952) 935-2757



Zimmerman, Jeff M., DDS, Family Dentistry

Zimmerman Family Dentistry
1213 Broad Avenue, Suite 1
Gulfport, MS 39501
Tel: (228) 863-5171
Fax: (228) 863-5233



Zorn, Jeffrey G., MD, Radiology

Virtual Radiologic Professionals, LLC
11995 Singletree Lane, Suite 500
Eden Prairie, MN 55344
Tel: (952) 392-1121
Fax: (952) 935-2757

Memorial Medical Staff Members



Zuehlke, Peter D., DO, Radiology

Virtual Radiologic Professionals, LLC

11995 Singletree Lane, Suite 500

Eden Prairie, MN 55344

Tel: (952) 392-1121

Fax: (952) 935-2757

PROVIDER DIRECTORY



 **Memorial**
HEALTH SYSTEM

2.....	Allergy & Immunology
3.....	Cardiac Electrophysiology
4.....	Cardiology
9.....	Cardiothoracic Surgery
10.....	Colorectal Surgery
11.....	Ear, Nose & Throat
12.....	Endocrinology / Diabetes
14.....	Family Medicine
26.....	Gastroenterology / Pediatric Gastroenterology
29.....	General Surgery
31.....	Hospitalists
33.....	Specialty Hospitalists
34.....	Infectious Disease
35.....	Intensivists
36.....	Internal Medicine
42.....	Neurology
44.....	Neurosurgery
45.....	Neurointerventional Radiology
46.....	Nursing Centers
47.....	Obstetrics / Gynecology
50.....	Occupational Medicine
51.....	Oncology / Medical / Hematology
53.....	Oncology / Radiation
54.....	Orthopedic Surgery
56.....	Orthopedic Trauma
57.....	Outpatient Rehabilitation Services
58.....	Physical Medicine & Rehabilitation
59.....	Pain Management
61.....	Palliative Care
62.....	Pediatrics
64.....	Podiatry
65.....	Pulmonology
66.....	Pulmonology / Interventional Pulmonology
67.....	Rheumatology / Pediatric Rheumatology
68.....	Senior Behavioral Health
69.....	Sleep Medicine
70.....	Urology
71.....	Vascular Surgery
72.....	Wound Care
73.....	Hospitals
74.....	Diagnostic Imaging Centers
78.....	Surgery Centers
80.....	Index

ALLERGY & IMMUNOLOGY

If you have particular health problems, your primary care provider might refer you to a specialist, a physician who has completed advanced education and clinical training in a specific area of medicine. Allergists/Immunologists treat a variety of conditions including:

- ▲ Asthma
- ▲ Food and Drug Allergy
- ▲ Anaphylaxis
- ▲ Insect Allergy
- ▲ Sinusitis



James Holland, MD



**Madelena
Campbell, NP**

Memorial Physician Clinics

Allergy & Immunology

(228) 867-5185 · fax (228) 867-5189

12261 Highway 49N, Suite 11 | Gulfport, MS 39503



CARDIAC ELECTROPHYSIOLOGY

An electrophysiologist, also known as a cardiac electrophysiologist or cardiac EP, is a cardiologist who focuses on testing for and treating problems involving irregular heart rhythms, also known as arrhythmias. They examine your heart's electrical system, which sends an electrical signal through your cells in order to regulate heart rate and rhythm.



**B. Judson Colley, III,
MD, MPH**



**Charles "Hunter"
Middleton, NP**



Jessica Blair, PA

Memorial Physician Clinics

Heart Rhythm Clinic

(228) 575-2589 · fax (228) 575-1543

1408 44th Avenue | Gulfport, MS 39501

1756 Popp's Ferry Road | Biloxi, 39532

1501 Bienville Boulevard | Ocean Springs, 39564

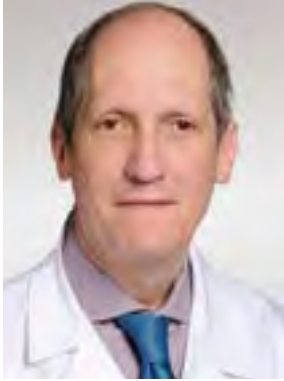
3704 Bienville Boulevard | Ocean Springs, 39564

147 Reynoir Street, Suite 204 | Biloxi, 39530



CARDIOLOGY

Cardiologists specialize in finding, treating and preventing diseases of the heart and blood vessels. An interventional cardiologist is trained in internal medicine with several additional years of training in cardiology. They specialize in diagnosing and treating cardiovascular disease, as well as congenital and structural heart conditions, through catheter-based procedures, such as angioplasty and stenting. Procedures may also involve device-based therapies like loop recorders, pacemakers and ICDs.



Jay Libys, MD, FACC



**Paul Mullen, MD,
FACC, FACP, FSCAI**



**Antoine Rizk, MD,
FACC, FACP, FSCAI**



**Casey
Adams, NP**



**Robin
Allen, NP**



**Blakley
Brackett, NP**



**Mariah
Cox, NP**



**Brian
Gibson, NP**



**Rachel
Magee, NP**



**Lezlie
Mathews, NP**



**Myesha
Minor, NP**



**Kristian
Spear, NP**



**Michelle
Stewart, NP**



**Natalie
Wilkinson, NP**

**Not pictured:
Elizabeth Coleman, NP**

Memorial Physician Clinics

Coast Cardiovascular Associates

(228) 863-8868 · fax (228) 863-8956

1391 Broad Avenue | Gulfport, MS 39501

1756 Popp's Ferry Road | Biloxi, MS 39532

147 Reynoir Street, Suite 204 | Biloxi, MS 39530

45000 East Aloha Drive | Diamondhead, MS 39525

835 Thames Avenue | Bay St. Louis, MS 39520



CARDIOLOGY



**Wakkas Tayara, MD,
FACP, FACC**

Memorial Physician Clinics

Memorial Interventional Cardiology **(228) 575-1500 · fax (228) 575-1528**

1340 Broad Avenue, Suite 320 | Gulfport, MS 39501



Michael Payment, MD, FACC



Julia Bishop, PA



**Danielle Hoda,
AGACNP-B**



Tony Turan, NP

Memorial Physician Clinics

Gulf Coast Heart

(228) 214-9640 · fax (228) 214-9642

4533 13th Street | Gulfport, MS 39501



**Sati Adlakha, DO,
FACC, FSCAI**

Memorial Physician Clinics

Gulf Coast Heart Institute

(228) 205-3496 · fax (228) 205-4315

3111 Shortcut Road | Pascagoula, MS 39567



CARDIOLOGY



Manoj Shah, MD, FACC



Patrick Blythe, NP



Stevi Grzyb, NP



Tara White, NP

Memorial Physician Clinics

Coast Cardiology Center

(228) 868-5555 · fax (228) 574-2001

1203 Broad Avenue | Gulfport, MS 39501



Bharat Sangani, MD

Memorial Physician Clinics

Orange Grove Medical Specialties - Dr. Sangani Gulfport

(228) 822-6022 · fax (228) 832-5195

15286 Community Road | Gulfport, MS 39503



CARDIOLOGY



Bassam R. Baroudi, MD, FACC, FSCAI



James Hardwick, MD, FACC



Tiffany Brosh, NP



Katherine Bruister, PA



Dave Buckheister, NP

Memorial Physician Clinics

Coast Heart Institute

(228) 863-5211 • fax (228) 863-4101

4215 15th Street | Gulfport, MS 39501

9424 Three Rivers Road, Suite B | Gulfport, MS 39503

45000 East Aloha Drive | Diamondhead, MS 39525



Cyril V.K. Bethala, MD



Naomi Wilson, NP

Memorial Physician Clinics

Cyril V.K. Bethala, M.D. PA Cardiology

(228) 575-1834 • fax (228) 575-1698

4507 15th Street | Gulfport, MS 39501

147 Reynoir Street, Suite 102 | Biloxi, MS 39530



CARDIOLOGY



Juan Del Cid Fratti, MD



Shwan Jalal, MD, FACC



Umair Malik, MD, FACC



William O. Passarelli III, MD, FACC



Rogin Subedi, MD, FSCAI



Ediz Z. Tasan, MD, FACC, FSCAI



Mahmoud H. Zayed, MD, FACC, FSCAI



Jamie Endt Riley, FNP-C



Jerilyn Farmer, MSN, NP-C



Savannah McDaniel, APRN-BC



Richard McMullan, AGACNP-BC



Jackie Neal, NP



Stephanie N. Nguyen, FNP-C



Phylengthia Preyear, FNP-C



Ambere' Riggs, NP



Abby Thibodeaux, FNP-C



Vivian Tran, FNP-C



Christen "Reed" Westbrook, NP



Ashley Witter, NP-C

Memorial Physician Clinics

Southern Mississippi Heart Center

(228) 872-4040 • fax (228) 875-2387 - Ocean Springs

(228) 762-1002 • fax (228) 762-1012 - Pascagoula

(228) 575-8020 • fax (228) 539-0493 - Gulfport North

(228) 822-6722 • fax (228) 822-6325 - Gulfport South

3704 Bienville Boulevard, Suite B | Ocean Springs, MS 39564

3616 Hospital Road | Pascagoula, MS 39581

147 Reynoir Street, Suite 307 | Biloxi, MS 39530

4300B West Railroad Street | Gulfport, MS 39501

1440 East Central Avenue | Wiggins, MS 39577

12261 US Hwy 49, Suite 11 | Gulfport, MS 39503

45000 East Aloha Drive | Diamondhead, MS 39525

147 Reynoir Street, Suite 204 | Biloxi, MS 39530

1340 Broad Avenue, Suite 320 | Gulfport, MS 39501

1501 Bienville Boulevard | Ocean Springs, MS 39564

835 Thames Avenue | Bay St. Louis, MS 39520

Not pictured:
Trimiya King, NP



CARDIOTHORACIC SURGERY

Cardiothoracic Surgeons perform open heart surgeries for valve repair and replacements and coronary artery bypasses. Diseases of the lungs and the chest that are surgically treated include tumors and advanced emphysema.



Walter Surowiec, DO, FACS



Tiffany Sanders, NP

Memorial Physician Clinics

Cardiothoracic Surgery

(228) 575-1500 · fax (228) 575-1528

1340 Broad Avenue, Suite 320 | Gulfport, MS 39501



COLORECTAL SURGERY

Colorectal Surgeon a surgeon that specializes in diagnosing and treating disorders of the colon, rectum and anus through medical and surgical intervention.

- ▲ Colon & Rectal Cancer
- ▲ Chronic Constipation
- ▲ Bowel Incontinence
- ▲ Diverticular Disease
- ▲ Hemorrhoids, Fissure & Fistula
- ▲ Inflammatory Bowel Disease
- ▲ Polyps



Joshua Tyler, MD



Benjamin Watson, MD



Angela Dauro, PA

Memorial Physician Clinics

Memorial Medical Group Colorectal Surgery

(228) 463-1273 · fax (228) 436-1267

147 Reynoir Street, Suite 200 | Biloxi, MS 39530

EAR, NOSE & THROAT

An ear, nose, and throat doctor, or an ENT for short, is a medical specialty which is focused on the ears, nose, and throat. It is also called otolaryngology-head and neck surgery because specialists are trained in both medicine and surgery. Common conditions treated are:

- ▶ Ear infections
- ▶ Balance disorders
- ▶ Tinnitus
- ▶ Allergies
- ▶ Sinusitis
- ▶ Smell disorders
- ▶ Swallowing disorders
- ▶ Tumors
- ▶ And many others



Bryan Leatherman, MD



Karen Keel Williams, AuD



Jacinta Stegall, NP

Memorial Physician Clinics

Gulf Coast ENT

(228) 864-2121 • fax (228) 678-0950

9000 Lorraine Road | Gulfport, MS 39503

Memorial Physician Clinics

Vestibular Clinic Suite A

(228) 864-2121 • fax (228) 678-0950

3017 13th Street, Suite A | Gulfport, MS 39501



ENDOCRINOLOGY/DIABETES

Endocrinologists diagnose and treat hormone-producing glandular and metabolic systems. Specializations include neuroendocrinology. Common conditions include:

- ▲ Hypothyroidism
- ▲ Hyperthyroidism
- ▲ Metabolic Bone Disease
- ▲ Diabetes Mellitus
- ▲ Pituitary Dysfunction
- ▲ Diabetes Educational Support



Mark Borchelt, MD



Traci Evans, NP



Ashley House, NP



Cathy Kim, NP



Samantha McGill, NP



Billy Moore, NP

Memorial Physician Clinics

Endocrinology

(228) 867-6062 · fax (228) 867-2598

4540 West Railroad Street | Gulfport, MS 39501

45000 E. Aloha Drive | Diamondhead, MS 39525

3434 Bienville Blvd. | Ocean Springs, MS 39564

4603 Hospital Road | Pascagoula, MS 39581

835 Thames Avenue | Bay St. Louis, MS 39520

1440 East Central Avenue | Wiggins, MS 39577

ENDOCRINOLOGY/DIABETES



Ellen Caswell, MD



Samantha
McGill, NP

Memorial Physician Clinics

Pass Christian Endocrinology / Courthouse Multispecialty

(228) 822-6770 · fax (228) 896-5374

118 Menge Avenue | Pass Christian, MS 39571

394 Courthouse Road | Gulfport, MS 39507



Marc Lozano, MD

Memorial Physician Clinics

Endocrinology Suite 207

(228) 822-6845 · fax (228) 822-6844

147 Reynoir Street, Suite 207 | Biloxi, MS 39530

Memorial Physician Clinics

Memorial Diabetes Education Pathway

(228) 575-1333 · fax (228) 896-3922

371 Courthouse Road | Gulfport, MS 39507



FAMILY MEDICINE

Primary Care Providers (PCP) attend to your general healthcare needs. you will benefit from a long-term relationship with a PCP who knows your medical background and understands what's important to you. Traditionally PCPs fall into three specialties—Family Medicine (treating patients of all ages), Internal Medicine (treating adult patients), and Pediatrics (treating children).

Primary Care includes:

- ▲ Diagnosis and Treatment of illnesses and injuries
- ▲ Routine Exams
- ▲ Counseling
- ▲ Preventive Care



Tessa Helsel, DO

Memorial Physician Clinics

Bay St. Louis Internal Medicine & Multispecialty

(228) 575-2383 · fax (228) 463-0827

835 Thames Avenue | Bay St. Louis, MS 39520



Shawna Mitchell, FNP-C

Memorial Physician Clinics

Community Care Reynoir

(228) 822-6788 · fax (228) 822-6789

147 Reynoir Street, Suite 201 | Biloxi, MS 39530



Tomika Dedeaux, NP

Memorial Physician Clinics

Family Medicine and Walk-In Tribe Drive

(228) 314-2593 · fax (228) 314-2594

1735 Tribe Drive, Suite B | Biloxi, MS 39532

FAMILY MEDICINE



C. Shane Blomberg, MD



Gene Cathey, MD



Rebecca Rose, MD



**Linda Rene
Cathey, NP**



**Nicole
Whitman, NP**

Memorial Physician Clinics

Cedar Lake Family Practice and Walk-In

(228) 865-3200 • fax (228) 575-1660

1756 Popp's Ferry Road | Biloxi, MS 39532



Rickey Chance, DO



Rebecca Rose, MD



Travis Webster, MD



**Dana
Albrecht, NP**



**Holly
Cuevas, NP**



**Erika
Lett, NP**

Memorial Physician Clinics

Family Practice Medical Park

(228) 822-6030 • fax (228) 207-1378

1759 Medical Park Drive | Biloxi, MS 39532



FAMILY MEDICINE



Nicholas Bondio, DO



Garrett Fratesi, DO



Bitra Ghaffari, MD



Teresa Meece, NP



Ann Reed, NP

Memorial Physician Clinics

Diamondhead Family Medicine

(228) 822-6006 · fax (228) 255-3626

45000 E. Aloha Drive | Diamondhead, MS 39525



Bitra Ghaffari, MD

Memorial Physician Clinics

Hancock Multispecialty

(228) 575-2848 · fax (228) 586-9230

4300 Leisure Time Drive | Diamondhead, MS 39525



FAMILY MEDICINE



**Ashley
Thompson, NP**

Memorial Physician Clinics

Gautier Walk-In Clinic

(228) 822-6148 · fax (228) 818-5949

6510 Hwy 90, Suite A | Gautier, MS 39553



Steven Schepens, MD



**Robyn
Hudson, NP**



**Anne
Musgrove, NP**



**Stacie
Ramsey, NP**



**Kimberly
Rayborn, NP**

Memorial Physician Clinics

Southern Coast Family Practice

(228) 896-4417 · fax (228) 604-0121

394 Courthouse Road, Suite A | Gulfport, MS 39507



FAMILY MEDICINE



Vanessa Duncombe, MD



**Grace
Ford, NP**



**Sandra
Matthews, NP**

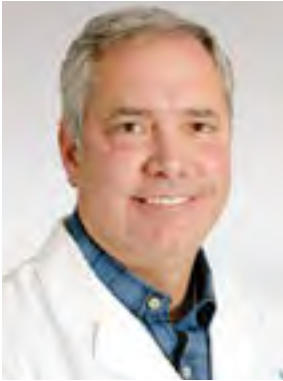
Memorial Physician Clinics

Family Medicine and Walk-In Clinic Acadian Plaza

(228) 867-5185 · fax (228) 867-5189

12261 Hwy 49N, Suite 11 & 9 | Gulfport, MS 39503

FAMILY MEDICINE



Joel Burwell, DO



**Jared
DeLoach II, NP**



**Kristi
Kennon, PA**

Memorial Physician Clinics

Family Practice Three Rivers

(228) 575-2660 • fax (228) 863-0502

9454 Three Rivers Road, Suite D | Gulfport, MS 39503



**Tiffany
Quinn-Magee, NP**



**Ciji
Wallace, FNP**

Memorial Physician Clinics

Urgent Care

(228) 822-6065 • fax (228) 822-1006

1104 Broad Avenue | Gulfport, MS 39501



FAMILY MEDICINE



C. Marcella Valderrama, MD



Diane Edrington, NP

Memorial Physician Clinics

Broad Avenue Family Practice

(228) 822-9360 • fax (228) 822-9361

1202 Broad Avenue | Gulfport, MS 39501



Gene Cathey, MD



Jimmy Dimitriades, MD



John Lee, DO



Brian Maddox, DO



Rebecca Rose, MD



Steven Schepens, MD



Travis Webster, MD



Stacie Ramsey, NP

Memorial Physician Clinics

Courthouse Family Practice

(228) 822-6624

fax (228) 265-5408

371 Courthouse Road | Gulfport, MS 39507



FAMILY MEDICINE



George Brooks, DO



David Roberts, MD



**Glynnis
Randall, NP**

Memorial Physician Clinics

Internal Medicine Clinic

(228) 822-6016 · fax (228) 868-8435

1110 Broad Avenue, Suite 700 | Gulfport, MS 39501



**Kimberly
Esser, NP**

Memorial Physician Clinics

Courthouse Walk-In

(228) 575-1333 · fax (228) 896-3922

371 Courthouse Road | Gulfport, MS 39507



Sean Kerby, MD



**Jennifer
Hunter, NP**



**Barbara
Kerby, NP**

Memorial Physician Clinics

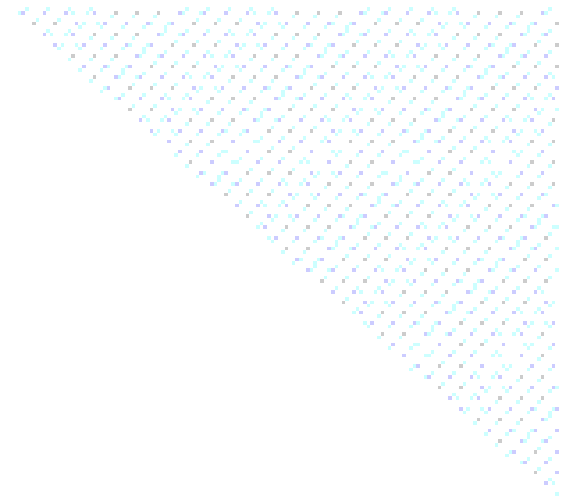
Family Practice Bridgewater Center and Walk-In

(228) 575-1787 · fax (228) 896-5269

8970 Lorraine Road | Gulfport, MS 39503



FAMILY MEDICINE



George Ward, MD



Cristina Rupp, NP



Erica Turan, NP

Memorial Physician Clinics

Beatline Medical Clinic - Walk-In

(228) 575-2118 · fax (228) 868-4293

5120 Beatline Road, Suite B | Long Beach, MS 39560



Janus Kulpa, MD



Alchar Jackson, NP



Billy Moore, NP



Dandria Wiley, NP

Memorial Physician Clinics

Family Practice Ocean Springs

(228) 575-2180 · fax (228) 875-1124

3434 Bienville Blvd. | Ocean Springs, MS 39564

FAMILY MEDICINE



John Lee, DO



Brian Maddox, DO



Christine Wells-Wonsley, NP

Memorial Physician Clinics

Ocean Springs Primary Care and Multispecialty **(228) 822-6110 • fax (228) 875-8048**

1501 Bienville Blvd. | Ocean Springs, MS 39564



Billy Moore, NP

Memorial Physician Clinics

Pascagoula Family Practice **(228) 822-6041 • fax (228) 762-3839**

4603 Hospital Road | Pascagoula, MS 39581



Tony Tanner, NP

Memorial Physician Clinics

Primary Care & Multispecialty Pascagoula **(228) 201-1003 • fax (228) 201-1006**

3616 Hospital Road, Suite 3 | Pascagoula, MS 39581

FAMILY MEDICINE



**Kimberly
Gibson, NP**

Memorial Physician Clinics

The Crossings at Vidalia

(228) 575-1476 · fax (228) 586-2457

27368 J.P. Ladner Road, Suite 3 | Pass Christian, MS 39571



Laura Sanford, DO

Memorial Physician Clinics

Pass Christian Family Medicine

(228) 822-6224 · fax (228) 222-4303

116 Menge Avenue, Suite B | Pass Christian, MS 39571



Kathy Keimig, MD



**Whitney
Moore, NP**



**Chelsey
Windham, NP**

Memorial Physician Clinics

Family Practice St. Martin

(228) 575-2545 · fax (228) 872-8029

14213 Cook Road East, Bldg A | Biloxi, MS 39532



FAMILY MEDICINE



John Thames, DO



**Howard "Bud"
Westbrook, MD**



**Kimberly
Rayborn, NP**

Memorial Physician Clinics

Primary Care & Multispecialty Wiggins

(601) 928-9674 · fax (601) 928-9676

1428 Azalea Drive South | Wiggins, MS 39577



**Rebecca
Harris, NP**

Memorial Physician Clinics

Memorial Stone County Medical Center

(601) 928-6700 · fax (601) 928-6731

1440 East Central Avenue | Wiggins, MS 39577



GASTROENTEROLOGY

Gastroenterologists diagnose and treat conditions affecting the esophagus, stomach, small intestine, large intestine (colon) and biliary system (liver, pancreas, gallbladder, bile ducts).

- ▲ Abdominal Pain and Discomfort
- ▲ Difficulty Swallowing
- ▲ Diverticular Disease
- ▲ Gallbladder Disease
- ▲ Gastroesophageal Reflux Disease
- ▲ Malabsorption Disorders
- ▲ Hemorrhoids
- ▲ Hiatal Hernias
- ▲ Liver Disease
- ▲ Ulcers



Alva Dillon, MD



**John McKee, III,
MD, FACP**



Alfred McNair, MD

**Not pictured:
Matthew Dykes, PA**



**LuAn
Brown, NP**



**Deborah
Fore, NP**



**Gracia
Hudson, NP**



**Marshea
Liddell, NP**



**Takiffany
Palmer, DNP**



**Susan
Muzslay, RDN, LDN**

Pediatric Gastroenterology



Angela Pressley-Wallace, MD

Memorial Physician Clinics

Digestive Health Center

(228) 872-6291 • fax (228) 875-3385

3890 Bienville Blvd. | Ocean Springs, MS 39564

1720A Medical Park Drive | Biloxi, MS 39532

GASTROENTEROLOGY



Darrell Finlay, MD



J. "Trippe" McNeese, MD



Jordan Roussel, MD



**Alexandria
Tanner, NP**

Memorial Physician Clinics

Gulf Coast Gastroenterology

(228) 867-4150 · fax (228) 875-9558

14209 Cook Road East, Suite 200 | Biloxi, MS 39532

4603 Hospital Road | Pascagoula, MS 39581

1756 Popp's Ferry Road | Biloxi, MS 39532

1501 Bienville Blvd. | Ocean Springs, MS 39564

1110 Broad Avenue, Suite 700 | Gulfport, MS 39501

4500 West Railroad Street | Gulfport, MS 39501

45000 East Aloha Drive | Diamondhead, MS 39525

GASTROENTEROLOGY



Scott Gioe, MD



Amanda Hill, NP



Jamie Morris, NP



Laura Rogers, NP

Memorial Physician Clinics

Memorial Gastroenterology Center

(228) 863-8836 • fax (228) 864-4417

4500 West Railroad Street | Gulfport, MS 39501

GENERAL SURGERY

General Surgeons perform routine, emergency and minimally invasive laparoscopic procedures:

- ▲ Hernia Surgery
- ▲ Appendectomy
- ▲ Gallbladder Surgery
- ▲ Other Abdominal Surgeries
- ▲ and more

Sub-specialty procedures are also performed by some surgeons: Breast Surgery, Trauma Surgery, Plastic Surgery, Colorectal Surgery, Bariatric (Weight Loss) Surgery



Brian Anthony, MD



Kristine Carter, MD



Kyle Iverson, MD



Trey Rimmer III, MD



Derek Ware, MD



**Anna
Clark, PA**

Memorial Physician Clinics

General Surgery

(228) 575-1200 • fax (228) 575-1205

1340 Broad Avenue, Suite 240 | Gulfport, MS 39501

1104 Broad Avenue | Gulfport, MS 39501

(228) 575-2920 • fax (228) 466-4677

833 Highway 90, Suite 1 | Bay St. Louis, MS 39520

12261 Highway 49N, Suite 11 | Gulfport, MS 39503

45000 East Aloha Drive | Diamondhead, MS 39525



GENERAL SURGERY



Robert Harris, MD, FACS

Memorial Physician Clinics

Memorial Medical Group Surgical Services

(228) 436-1348 · fax (228) 436-1373

147 Reynoir Street, Suite 200 | Biloxi, MS 39530



T. Paul Mace, MD, FACS



Lisa Burwell, NP

Memorial Physician Clinics

Gulfport Surgery Clinic

(228) 822-6160 · fax (228) 822-6162

1312 44th Avenue | Gulfport, MS 39501



HOSPITALISTS

A hospitalist is a doctor who provides care for patients at a hospital. They have the same education and training as your primary care doctor, but specialize in providing hospital care.



Nabil Azar, MD



Mubeena Begum, MD



Nathan Boles, MD



Matthew Carlson, MD



Phillip Compton, MD



Dasha Cowart, DO



Emma Craig, MD



William Crittenden, MD



Benjamin Dahlberg, DO



Malcolm Dean, MD



Hema Edupuganti, MD



Bill Erwin, MD



John Grady, MD



Sarah Hamid, MD



Ann Hughley-Emegara, MD



Grant Jernigan, DO



Nichole Love-Grove, DO



Melantha Manns, MD



Jessie Martin, DO



Jonathan Mihnovets, DO



Melissa Muirhead, MD



David Northington, DO



Indrajit Patel, MD



Hari Rao, MD



Hassan Shafique, MD



Benjamin Smith, MD



Charles Stanich, MD



Patrick Stovall, DO



Johnathan Vu, MD



Joel Watts, MD

Not pictured: Matthew Ballew, DO; Mario Cuzzi III, DO; Amanda Deans, MD; Chalonda Handy, MD; Timothy Hiebert, MD; Grace Smith, MD; Jared Vinson, DO

HOSPITALISTS



**Ayana
Clay, NP**



**Katherine
Dumal, NP**



**Brittany
Everhart, NP**



**Diane
Jakins, NP**



**Erin
Kijonka, NP**



**Kim
Le, NP**



**Kelli
McCreight, NP**



**Jennie McKee-
McKinney, NP**



**Jessica
Mitchell, NP**



**Kanieshia
Mitchell, NP**



**Trenita
Moore, NP**



**Dave
Morris, NP**



**Ricky
Muirhead, NP**



**Joanie
Murphy, NP**



**Candace
Pendowski, NP**



**Amber
Tarver, NP**



**Robyn
Wheeler, NP**



**Schaquwa
Williams, NP**

**Not pictured: Robin Cawfield, NP; Toni Miller, NP;
Kim Payne, NP; Shauna Stringer, NP; Heather Wagner, NP**

Memorial Physician Clinics

Memorial Health System

(228) 867-4396 · fax (228) 867-5354

4500 Thirteenth Street | Gulfport, MS 39501

150 Reynoir Street | Biloxi, MS 39530

1434 East Central Avenue | Wiggins, MS 39577

SPECIALTY HOSPITALISTS

Nephrology



Lyn Aure, MD

Gastroenterology



Dana Richardson, NP

Memorial Physician Clinics

Memorial Health System

(228) 867-4396 • fax (228) 867-5354

4500 Thirteenth Street | Gulfport, MS 39501

OB Hospitalists/Laborists



Noel Duplantier, MD



Eniola Fagbongbe, MD



Erin Fairbrother, MD



James Gaddy, MD



Vadim Gelman, MD



Jonathan Jones, MD



Blake Landry, MD



Michael McKay, MD



Ian Nguyen, MD



Holly Summerlin, MD



Erna Waxman, MD

Not pictured: Sharon Bush-Coaxum, MD

Memorial Physician Clinics

Memorial Health System

(228) 867-4396 • fax (228) 867-5354

4500 Thirteenth Street | Gulfport, MS 39501



INFECTIOUS DISEASE

Infectious Disease Specialists have extensive training in all kinds of infections, including those caused by bacteria, viruses, fungi, and parasites. They diagnose and treat infections of the sinuses, heart, brain, lungs, urinary tract, bowel, bones and pelvic organs.



Nicholas Conger, MD



Kami Bell, NP



Matt Gatlin, NP



Lauren Quave, NP



Brenda Wakham Bennett, NP

Memorial Physician Clinics

Memorial Infectious Disease

(228) 575-2700 · fax (228) 575-2710

1340 Broad Avenue, Suite 410 | Gulfport, MS 39501

1756 Popp's Ferry Road | Biloxi, MS 39532

INTENSIVISTS

Intensivists direct and provide medical care in a hospital's intensive care unit (ICU). In addition, intensivists organize the communication between various doctors caring for a patient, and serve as the point of contact for other doctors and nurses for questions and updates and for delineating a comprehensive plan of care.



Joseph Bosarge, MD



**William "Russ"
Cullinane, Jr., DO**



Olusola Isikalu, MD



George Kotti, MD



**Jennifer
Buckley, NP**



**Brandi
Busby, NP**



**Shera
Butt, NP**



**Stephanie
Heritage, NP**



**Steven
Kelly, NP**



**Maria Robinson-
Comer, NP**



**Tim
Robinson, NP**



**Emily
Venatta, NP**

Memorial Hospital Gulfport **(228) 575-2130 · fax (228) 575-2530**

4500 Thirteenth Street | Gulfport, MS 39501



Summer Allen, MD



Theresa Case, DO



Bobby Tullos, MD

Memorial Hospital Biloxi **(228) 575-1775 · fax (228) 575-1770**

150 Reynoir Street | Biloxi, MS 39530



INTERNAL MEDICINE

Internal medicine doctors, also referred to as internists, focus on prevention, diagnosis, and treatment of internal diseases. They manage patients with undifferentiated or multi-system disease processes.



James Crittenden, MD



Jennifer Champagne, NP

Memorial Physician Clinics

Crittenden Internal Medicine **(228) 467-1414 · fax (228) 467-5863**

1001 Benigno Lane | Bay St. Louis, MS 39521



Rachael Nuschke, NP

Memorial Physician Clinics

Drinkwater Multispecialty **(228) 575-2929 · fax (228) 467-4337**

179 Drinkwater Road | Bay St. Louis, MS 39520



Irene Koskan, MD



Kelsey Cobb, NP



Ashley Skaggs, NP

Memorial Physician Clinics

Internal Medicine Bay St. Louis **(228) 575-2383 · fax (228) 463-0827**

835 Thames Avenue | Bay St. Louis, MS 39521



INTERNAL MEDICINE



Rowe Crowder III, MD



Lisa Anthony, NP



Katherine Speaker, NP

Memorial Physician Clinics

Bay Internal Medicine & Multispecialty

(228) 463-1649 · fax (228) 463-0138

952 Green Meadow Road | Bay St. Louis, MS 39520



Belinda Alexander, MD



Adrian McLemore, NP

Memorial Physician Clinics

Internal Medicine Pass Road

(228) 822-6590 · fax (228) 385-4695

2771 Pass Road, Suite A | Biloxi, MS 39531



Valerie Lenox, MD



Shawna Reich, NP

Memorial Physician Clinics

Internal Medicine Cedar Lake

(228) 865-3200 · fax (228) 575-1660

1756 Popp's Ferry Road | Biloxi, MS 39532

INTERNAL MEDICINE



T. Benjamin Skelton, MD



Matthew 'Jack' Murray, MD

Memorial Physician Clinics

Internal Medicine Acadian Plaza
(228) 867-5185 · fax (228) 206-3741

12261 Highway 49N, Suite 11 | Gulfport, MS 39503



**Brittany
Coleman, NP**

Memorial Physician Clinics

Internal Medicine Acadian Plaza
(228) 867-5185 · fax (228) 575-2177

12261 Highway 49, Suite 11 | Gulfport, MS 39503



Kaizad Tamboli, MD

Memorial Physician Clinics

Magnolia Grove Internal Medicine
(228) 863-4000 · fax (228) 863-4003

4333 15th Street, Suite A | Gulfport, MS 39501

INTERNAL MEDICINE



Boyd Benefield, MD



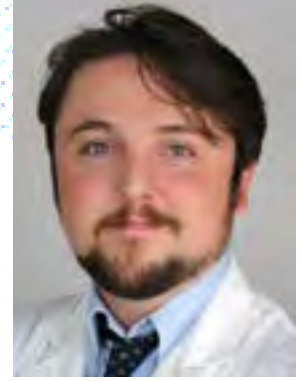
Phillip Compton, MD



Lynn Leatherwood, MD



Bharat Sangani, MD



Doug Williams, MD



**Greg
Parker, NP**



**Darlene
Purvis, NP**

Memorial Physician Clinics

Orange Grove Medical Specialties

(228) 822-6022 · fax (228) 832-5195

15286 Community Road | Gulfport, MS 39503



Mubeena Begum, MD

Memorial Physician Clinics

44th Avenue Internal Medicine

(228) 822-6067 · fax (228) 822-6737

1404 44th Avenue | Gulfport, MS 39501

INTERNAL MEDICINE



**Hannah
Gwin, MD, PharmD**



David LaRosa, MD



Mousa Maalouf, MD



**Amy
Simpson, NP**



**Onellis
Stanford, NP**

Memorial Physician Clinics

Memorial South Coast Internists **(228) 575-1400 · fax (228) 575-1414**

1340 Broad Avenue, Suite 310 | Gulfport, MS 39501



Seema Badve, MD



Virginia Blalack, MD



Wayne Latack, MD



Andrew Peterson, DO



T. Benjamin Skelton, MD

Memorial Physician Clinics

Broad Avenue Internal Medicine Clinic **(228) 822-6811 · fax (228) 822-6832**

1104 Broad Avenue | Gulfport, MS 39501



INTERNAL MEDICINE



**Jessica
Coolidge, NP**



**Amanda
Miller, NP**

Memorial Physician Clinics

Beatline Medical Clinic - Internal Medicine

(228) 575-2788 • fax (228) 868-4293

5120 Beatline Road, Suite A | Long Beach, MS 39560



Seema Badve, MD

Memorial Physician Clinics

Escatawpa Family Practice

(228) 475-1166 • fax (228) 475-9337

8006 Hwy 613 | Moss Point, MS 39562

NEUROLOGY

Neurologists treat disorders of the nervous system, including:

- ▲ Epilepsy
- ▲ Alzheimer's Disease
- ▲ Dementia
- ▲ Stroke
- ▲ Multiple Sclerosis
- ▲ Parkinson's Disease
- ▲ Peripheral Neuropathy
- ▲ Neuromuscular Disorders
- ▲ Sleep Disorders



Chelsea Grow, DO



Abha Mishra, MD



Lee Voulters, MD



**Isabel
Kessler, PA**



**April
Ridenhour, PA**



**Amber
Ladner, NP**

Memorial Physician Clinics

Neurosciences

(228) 867-4855 · fax (228) 867-4870

1340 Broad Avenue, Suite 440 | Gulfport, MS 39501

1756 Popp's Ferry Road | Biloxi, MS 39532

45000 E. Aloha Drive | Diamondhead, MS 39525

147 Reynoir Street, Suite 204 | Biloxi, MS 39530

1440 East Central Avenue | Wiggins, MS 39577

14209 Cook Road East, Suite 100 | Biloxi, MS 39532

15286 Community Road | Gulfport, MS 39503

118 Menge Avenue | Pass Christian, MS 39571

NEUROLOGY



Diane Ross, MD

Memorial Physician Clinics

Neurology Pass Road

(228) 867-5277 · fax (228) 896-3314

749 Oakleigh Avenue | Gulfport, MS 39507

NEUROSURGERY

Neurosurgeons are surgical specialists who treat disorders of the brain, spine, spinal cord and peripheral nerves. Our neurosurgeons specialize in robotic spine surgery and minimally invasive spine surgery.



Orhan Ilercil, MD



**Eric Wolfson, MD,
FAANS, FACS**



**Kristina
Dunn, NP**



**Alicia
McDaniel, NP**

Memorial Physician Clinics

Neurosurgery

(228) 867-4855 • fax (228) 867-4870

1340 Broad Avenue, Suite 440 | Gulfport, MS 39501

1756 Popp's Ferry Road | Biloxi, MS 39532

147 Reynoir Street, Suite 301 | Biloxi, MS 39530

1501 Bienville Boulevard | Ocean Springs, MS 39564

NEUROINTERVENTIONAL RADIOLOGY

Neurointerventional Radiology is a medical specialist who uses advanced imaging techniques to diagnose and treat complex vascular conditions of the brain and spinal cord through minimally invasive procedures.



Zachary Liner, MD



**James David
Thomasson, Jr., MD**

Memorial Physician Clinics

Neurointerventional Radiology

(228) 867-4855 • fax (228) 867-4870

1340 Broad Avenue, Suite 440 | Gulfport, MS 39501

NURSING CENTERS

Nursing Centers are residential centers for seniors who are medically stable but can't be cared for at home due to chronic conditions or a lack of mobility. They are places where residents can receive the care they need in order to maintain their health.



Stephen Johns, MD



Alicia Ellsberry, NP

Memorial Physician Clinics

Memorial Driftwood Nursing Center **(228) 822-6901 · fax (228) 822-6927**

1500 Broad Avenue | Gulfport, MS 39501



Phillip Compton, MD



Stefanie Warren, NP

Memorial Physician Clinics

Memorial Woodland Village Rehabilitation & Nursing Center **(228) 255-4832 · fax (228) 255-4833**

5427 Gex Road | Diamondhead, MS 39525

ADDITIONAL NURSING CENTER PROVIDERS:



Nathan Boles, MD



John Grady, MD



Charles Stanich, MD



Marly Davis, NP



Paulette Dawkins, NP



Hannah Fore, NP



Lauren Hunt, NP



Ricky Muirhead, NP



Kendra Samuel, NP

OBSTETRICS/GYNECOLOGY

An OB-GYN (obstetrician-gynecologist) specializes in the health of females. They provide care related to biological functions such as menstruation, childbirth, and menopause.



**Jonathan Jones, MD,
FACOG**



**John F. Pappas, MD,
FACOG**



**Amanda Sterling,
WHNP-BC**



**Erica Simmons
Yang, WHNP**

Memorial Physician Clinics

Memorial Woman's Clinic Gulfport

(228) 864-2752 • fax (228) 214-4206

4577 13th Street | Gulfport, MS 39501

12261 Highway 49N, Suite 11 | Gulfport, MS 39503



Tori Wilson Clark, MD



**Haley McCool, MD,
FACOG**



**Alisha H. Ware, MD,
FACOG**

Memorial Physician Clinics

Memorial Woman's Clinic Biloxi

(228) 822-6368 • fax (228) 207-3842

2781 CT Switzer Sr. Drive, Suite 306 | Biloxi, MS 39531

OBSTETRICS/GYNECOLOGY



**Donald Gaddy, MD,
FACOG**



**Dona Kioseff, MD,
FACOG**



**Claudia Sampong, DO,
FACOG**



**David Taylor, MD,
FACOG**



**Ashley
Dean-Reaves, NP**



**Kathrine
Gaddy, NP**



**Alyse
Hussey, NP**

Memorial Physician Clinics

Memorial Gulfport OBGYN Clinic

(228) 863-9977 or (228) 822-6898 · fax (228) 863-9912

4502 Old Pass Road | Gulfport, MS 39501

12261 Hwy 49N, Suite 11 | Gulfport, MS 39503

1440 East Central Avenue | Wiggins, MS 39577



Rachel Drouilhet, MD

Memorial Physician Clinics

Memorial Seaway OBGYN

(228) 206-1905 · fax (228) 206-1917

14231 Seaway Road, Suite 3004 | Gulfport, MS 39503

OBSTETRICS/GYNECOLOGY



**Keith Goodfellow, MD,
FACOG**



John Mallett, MD

Memorial Physician Clinics

Memorial Biloxi Medical Group GYN

(228) 436-6658 · fax (228) 435-4680

147 Reynoir Street, Suite 105 | Biloxi, MS 39530



**Noel Duplantier, MD,
FACOG**



Ally Duet, PA



**Stacey Kreher,
WHNP**



**Leanne Murray,
FNP-C, CLC**



**Leah Warren,
WHNP**

Memorial Physician Clinics

Hancock Women's Center

(228) 467-2555 · fax (228) 467-5480

1009 Benigno Lane | Bay St. Louis, MS 39520

OCCUPATIONAL MEDICINE

Occupational Medicine Specialists work to achieve and maintain the highest standards of occupational medicine and safety, including preventative medicine and management of illness, injury, and disability related to the workplace. The main focus of occupational medicine physicians is to:

- ▲ Prevent disease and promote wellness among workers
- ▲ Evaluate employee fitness for work
- ▲ Diagnose and treat occupational injury
- ▲ Knowledge about rehabilitation methods and health education
- ▲ Manage health service delivery



Rickey Chance, DO



Dana Albrecht, NP



Holly Cuevas, NP



Tamika Dedeaux, NP



Erika Lett, NP



Shawna Mitchell, NP

Memorial Physician Clinics

Family Practice Medical Park
(228) 822-6030 · fax (228) 207-1378

1759 Medical Park Drive | Biloxi, MS 39532

Memorial Physician Clinics

Community Care Reynoir
(228) 822-6788 · fax (228) 822-6789

147 Reynoir Street, Suite 201 | Biloxi, MS 39530

Memorial Physician Clinics

Family Medicine and Walk-In Tribe Drive
(228) 314-2593 · fax (228) 314-2594

1735 Tribe Drive, Suite B | Biloxi, MS 39532

Memorial Physician Clinics

Diamondhead Family Medicine
(228) 822-6006 · fax (228) 255-3626

45000 East Aloha Drive | Diamondhead, MS 39525

Memorial Physician Clinics

Memorial Stone County Medical Center
(601) 928-6700 · fax (601) 928-6731

1440 East Central Avenue | Wiggins, MS 39577



ONCOLOGY/MEDICAL/ HEMATOLOGY

Medical Oncologists diagnose and treat cancer using chemotherapy and other medications. They work as a team with primary care doctors and other medical specialties. They explain diagnoses, discuss treatment options, and offer recommendations.



Stephanie Fussell, MD



Olivia Hightower,
MD



Vibha Mishra-Nicaud,
DO, MPH



Allison Wall, MD



Brittany Hicks, NP



Addie Holcomb, NP



Bailey Stokes, PA-C



Danielle Lipski, OT

Memorial Physician Clinics

Hematology Oncology Partners, (HOPE)

(228) 575-1234 • fax (228) 867-4828

1340 Broad Avenue, Suite 330 | Gulfport, MS 39501

920 Tommy Munro Drive, Suite 100 & 200 | Biloxi, MS 39532

835 Thames Avenue | Bay St. Louis, MS 39520

45000 East Aloha Drive | Diamondhead, MS 39525

1440 East Central Avenue | Wiggins, MS 39577

118 Menge Avenue | Pass Christian, MS 39571

Memorial Physician Clinics

Memorial Infusion Clinics

(228) 575-1234 • fax (228) 575-1252

1340 Broad Avenue, Suite 180 | Gulfport, MS 39501

(228) 575-1234 • fax (228) 575-1636

920 Tommy Munro Drive, Suite 100 | Biloxi, MS 39532

(228) 822-6006 • fax (228) 255-3626

45000 East Aloha Drive | Diamondhead, MS 39525



ONCOLOGY/MEDICAL/ HEMATOLOGY



Sidra Khalid, MD



PV Pande, MD



George Shahin, MD



Pamela Tuli, MD



Gaela Youngblood,
PsyD



Mary 'Edye' Denius, NP

Dr. Tuli and Dr. Shahin are also board certified in Hematology.
Hematologists specialize in blood disorders and diseases of the blood.

Memorial Physician Clinics

The Medical Oncology Group (TMOG)

(228) 575-1234 · fax (228) 867-4866

1340 Broad Avenue, Suite 270 | Gulfport, MS 39501

45000 E. Aloha Drive | Diamondhead, MS 39525

920 Tommy Munro Drive, Suite 100 and 200 | Biloxi, MS 39532

Memorial Physician Clinics

Memorial Infusion Clinics

(228) 575-1234 · fax (228) 575-1252

1340 Broad Avenue, Suite 180 | Gulfport, MS 39501

(228) 575-1234 · fax (228) 575-1636

920 Tommy Munro Drive, Suite 100 | Biloxi, MS 39532

(228) 822-6006 · fax (228) 255-3626

45000 East Aloha Drive | Diamondhead, MS 39525

ONCOLOGY/RADIATION

A Radiation Oncologist is a specialized physician who uses targeted radiation therapy to treat cancer and other medical conditions. They work closely with a multidisciplinary team to develop personalized treatment plans that maximize effectiveness while minimizing side effects. With advanced technology and expertise, radiation oncologists help patients navigate their cancer journey with precision and compassionate care.



Eric Anderson, MD



Rod Krentel, MD



**Kerri
Kittrell, NP**

Memorial Physician Clinics

Memorial Radiation Oncology Services **(228) 575-2950 · fax (228) 575-2951**

Memorial Cancer Center

1340 Broad Avenue, Suite 140 | Gulfport, MS 39501



John Bechtel, MD

Memorial Physician Clinics

Memorial Biloxi Radiation Oncology Services Cedar Lake **(228) 867-4808**

1732 Medical Park Drive | Biloxi, MS 39532

ORTHOPEDIC SURGERY

Orthopedic Surgeons treat bone, joint and other musculoskeletal disorders. Treatment ranges from conservative, nonsurgical medical care to surgery including advanced, minimally invasive procedures.

- ▲ Sports Injury Repair
- ▲ Minimally Invasive Partial Knee Replacement
- ▲ Total Knee Replacement
- ▲ Arthoscopic Surgery
- ▲ Computer Assisted Surgery
- ▲ Meniscus Tear Repair
- ▲ Hand Surgery
- ▲ Foot & Ankle Surgery
- ▲ Anterior/Posterior Cruciate Ligament Repair (ACL, PCL)
- ▲ Carpal Tunnel Syndrome Treatment
- ▲ Shoulder Arthroscopy
- ▲ Rotator Cuff Tear Repair
- ▲ Ligament Reconstruction Repair
- ▲ Tendon Surgery
- ▲ Total Shoulder Replacements
- ▲ Total Hip Replacements



Arthur D. Black, MD



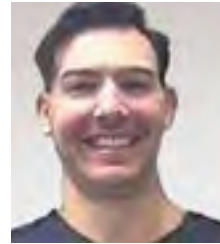
Dudley Burwell, Jr., MD



Karen Hand, MD



John Marc Bailey, PA



Andrew Borho, PA



Jason Caswell, PA



Stacy Knutson, PA



Kelly Cowan, NP



Jane Mattina, NP



Tricia Putnam, NP



Mary Beth Symmes, NP

Memorial Physician Clinics

Orthopedic Surgeons Biloxi

(228) 575-2636 • fax (228) 385-1595

Gulf Coast Professional Tower

2781 CT Switzer Drive, Suite 402 | Biloxi, MS 39531

4300 Leisure Time Drive | Diamondhead, MS 39525

Memorial Physician Clinics

Orthopedic Surgeons Pascagoula

(228) 822-6040 • fax (228) 762-3839

4603 Hospital Road | Pascagoula, MS 39581



ORTHOPEDIC SURGERY



**Michael
Stonnington, MD**



**Howard "Bud"
Westbrook, MD**



**Brian
Caswell, NP**



**Cliff
Davis, PA**



**Heather
Hager, NP**



**Onellis
Stanford, NP**

Memorial Physician Clinics

Broad Avenue Orthopedics
(228) 575-1945 · fax (228) 575-1964

1397 Broad Avenue | Gulfport, MS 39501

1428 Azalea Drive | Wiggins, MS 39577

Memorial Physician Clinics

George County Multispecialty
(601) 673-6120 · fax (601) 673-6121

57 Ratliff Street | Lucedale, MS 39452



**Thomas
Smith, MD**

**Not pictured:
Brendan Stroz, PA**

Memorial Physician Clinics

Multispecialty Suite 204
(228) 822-6320 · fax (228) 207-2102

147 Reynoir Street, Suite 204 | Biloxi, MS 39530



ORTHOPEDIC TRAUMA



Raymond Long, MD



John Raff, MD



**Lissa
Baber, NP**



**Amy
Head, NP**

Memorial Physician Clinics

Orthopedic Trauma

(228) 867-5012 · fax (228) 575-1885

1397 Broad Avenue | Gulfport, MS 39501

REHABILITATION SERVICES

Physical, Occupational & Speech Therapy

Physical therapy is a specialized healthcare discipline focused on improving a person's physical function and mobility. It involves the assessment, diagnosis, and treatment of musculoskeletal and neuromuscular conditions, often through exercises, manual therapy, and other modalities.

Occupational therapy aims to help individuals regain independence in their daily activities, especially after injury or illness. Occupational therapists work on enhancing fine motor skills, cognitive abilities, and adapting the environment to facilitate optimal functioning.

Speech therapy, also known as speech-language pathology, assists individuals in improving their communication and speech skills. Speech therapists work with people of all ages to address speech disorders, language difficulties, voice problems, and swallowing disorders.

Memorial Stone County

Outpatient Rehabilitation Services–ENCORE

David Davis, PT • Afton Farris, OT

Latricia Mimbs, LPTA/Regional Director • Mary Buzhardt, SLP

Andrew Cartlidge, COTA • Kelsi Vandevender, LPTA

(601) 928-6740 • fax (601) 928-6747

1440 East Central Avenue | Wiggins, MS 39577

PT Solutions of Biloxi West

Debra Littlepage, OT, Certified Hand Therapist

David McIntosh, PT, OCS, Certified Dry Needling and Manual Therapy

(228) 205-3676 • fax (228) 220-0023

2781 CT Switzer Drive, Suite 404 | Biloxi, MS 39531

Memorial Hospital Biloxi Therapy Center

Travis Burdick, DPT • Brandi Glidden, PTA • Marissa Landrum, PTA

Elora Pickich, SLP • Steven White, DPT

(228) 436-1588 • fax (228) 436-1586

147 Reynoir Street, Suite 103 | Biloxi, MS 39530

Pulmonary Rehabilitation

Pulmonary rehabilitation is a program designed for individuals with chronic respiratory conditions like COPD (Chronic Obstructive Pulmonary Disease) or asthma. It combines exercise, education, and breathing techniques to enhance lung function and overall well-being.

(228) 575-2476 • fax (228) 575-2478

4500 13th Street | Gulfport, MS 39501

Cardiac Rehabilitation

Cardiac rehabilitation is a structured program for people recovering from heart-related issues or surgeries. It incorporates exercise, education, and lifestyle modifications to improve cardiovascular health and reduce the risk of future heart problems.

(228) 575-2475 • fax (228) 575-2478

4500 13th Street | Gulfport, MS 39501



PHYSICAL MEDICINE & REHABILITATION

Physical Medicine and Rehabilitation (PM&R), also known as physiatry, is a medical specialty that involves restoring function for a person who has been disabled as a result of a disease, disorder, or injury.



Susi Folse, MD

Memorial Physician Clinics

Broad Avenue Orthopedics and Physical Medicine & Rehabilitation
(228) 575-1945 · fax (228) 575-1964

1397 Broad Avenue | Gulfport, MS 39501

PAIN MANAGEMENT

Pain management is an aspect of medicine and health care involving relief of pain in various dimensions, from acute and simple to chronic and challenging.



Samir Tomajian, MD



Dorothy Dickson-Rishel, PhD



Aline Tomajian, NP

Memorial Physician Clinics

Pain Management

(228) 867-5006 · fax (228) 867-5079

1340 Broad Avenue, Suite 450 | Gulfport, MS 39501

1756 Popp's Ferry Road | Biloxi, MS 39532



Bart Edmiston, MD



Lisa Slawson, NP

Memorial Physician Clinics

Pain Management St. Martin

(228) 575-2474 · fax (228) 872-8214

14209 Cook Road East, Suite 100 | Biloxi, MS 39532

57 Ratliff Street | Lucedale, MS 39542

PAIN MANAGEMENT



Charles Schlosser, MD

Memorial Physician Clinics

Multispecialty Suite 301

(228) 822-6752 · fax (228) 822-6782

147 Reynoir Street, Suite 301 | Biloxi, MS 39532

45000 East Aloha Drive | Diamondhead, MS 39525



Robert Burns, MD

Memorial Physician Clinics

Pain Management

(228) 822-6041 · fax (228) 762-3839

4603 Hospital Road | Pascagoula, MS 39581

14209 Cook Road East, Suite 100 | Biloxi, MS 39532

8006 MS Hwy 613 | Moss Point, MS 39581

952 Green Meadow Road | Bay St. Louis, MS 39520

PALLIATIVE CARE

Palliative care is an interdisciplinary medical caregiving approach aimed at optimizing quality of life and mitigating suffering among people with serious, complex, and often terminal illnesses.



Nathan Boles, MD



Hope Landis, NP



Joanie Murphy, NP

Not Pictured: Cynthia McDougal, NP

Memorial Physician Clinics

Palliative and Supportive Care

(228) 271-9661 • fax (228) 867-5354

4500 Thirteenth Street | Gulfport, MS 39501

PEDIATRICS

Pediatricians specialize in healthcare for children from birth through adolescence.

Pediatric care includes:

- ▲ Diagnosis and treatment of illnesses and injuries
- ▲ Routine Exams
- ▲ Preventive Care
- ▲ Guidance to keep children healthy



Timothy Bruni, MD



Aimee Mayfield, NP

Memorial Physician Clinics

Memorial Bruni Pediatric Clinic

(228) 575-2676 • fax (228) 864-7415

9454 Three Rivers Road, Suite A | Gulfport, MS 39503



David Reeves, MD



Holly Boyd, NP



Aimee Mayfield, NP

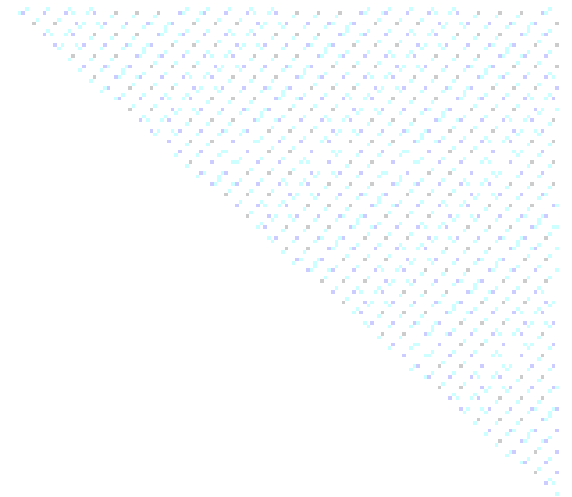
Memorial Physician Clinics

The Children's Clinic

(228) 868-3684 • fax (228) 868-3795

20091 Pineville Road | Long Beach, MS 39560

PEDIATRICS



**William 'Van'
Wurm, MD**



**Elizabeth 'Liz'
Smith, PNP**

Memorial Physician Clinics

Memorial Mississippi Pediatric Associates

(228) 818-0585 · fax (228) 818-0588

3631 Bienville Boulevard | Ocean Springs, MS 39564

PODIATRY

Podiatry, or podiatric medicine, is a branch of medicine devoted to the study, diagnosis, and treatment of disorders of the foot and ankle.



Renita Parker, DPM

Memorial Physician Clinics

Podiatry Clinic

(228) 822-6320 • fax (228) 207-2102

1440 East Central Avenue | Wiggins, MS 39577

147 Reynoir Street, Suite 204 | Biloxi, MS 39530

PULMONOLOGY

Pulmonologists diagnose and treat disorders of the lungs and respiratory system. Conditions include:

- ▲ Asthma
- ▲ Pneumonia
- ▲ Emphysema
- ▲ Bronchitis
- ▲ Sleep Apnea
- ▲ Sarcoidosis
- ▲ Lung Cancer
- ▲ Pleural Effusions
- ▲ Pulmonary Effusions
- ▲ Pulmonary Hypertension
- ▲ Tuberculosis, Atypical Tuberculosis
- ▲ Asbestosis, Fibrosis of the Lungs



John Douglas, MD



Fred Pakron, MD



Jay Segarra, MD



**Heather
Buckheister, NP**



**Hanh
Pham, NP**



**Erica
Turan, NP**

Memorial Physician Clinics

Gulf Coast Pulmonary and Sleep Consultants
(228) 539-3356 · fax (228) 206-3270 · fax (228) 539-3318

9424 Three Rivers Road, Suite A | Gulfport, MS 39503

PULMONOLOGY/ INTERVENTIONAL PULMONOLOGY



Summer Allen, MD



Theresa Case, DO



Bobby Tullos, MD



Chaeleena
Ladd, NP



Laura
Stevens, NP



Michelle Wright
Taylor, NP

Memorial Physician Clinics

Memorial Pulmonary Clinic—Interventional Pulmonary/Critical Care

(228) 575-1775 · fax (228) 575-1770 - Gulfport

(228) 822-6751 · fax (228) 822-6783 - Biloxi

1340 Broad Avenue, Suite 300 | Gulfport, MS 39501

147 Reynoir Street, Suite 306 | Biloxi, MS 39530

RHEUMATOLOGY

Rheumatologists diagnose and treat rheumatic diseases, connective tissue disorders and musculoskeletal disorders that include:

- ▶ Rheumatoid Arthritis
- ▶ Ankylosing Spondylitis
- ▶ Systemic Lupus Erythematosus
- ▶ Inflammatory Muscle Disease
- ▶ Polymyalgia Rheumatica
- ▶ Gout
- ▶ Osteoarthritis
- ▶ Psoriatic Arthritis
- ▶ Osteoporosis
- ▶ Sjogren's Syndrome
- ▶ Systemic Sclerosis
- ▶ Temporal Arteritis



**Richa
Gupta, MD**



**Krishna
Kommineni, MD**

Memorial Physician Clinics

Rheumatology Clinic

(228) 575-2588 • fax (228) 864-4154

1110 Broad Avenue, Suite 500 | Gulfport, MS 39501

PEDIATRIC RHEUMATOLOGY



**Laura
Tasan, MD**

Memorial Physician Clinics

Southern Mississippi Heart Center Pascagoula

(228) 762-1002 • fax (228) 762-1012

3616 Hospital Road | Pascagoula, MS 39581



SENIOR BEHAVIORAL HEALTH

Senior Behavioral Health focuses on diagnosing, treating, and managing mental health and behavioral conditions that commonly affect older adults, typically those aged 65 and above. The approach is tailored to the unique challenges and needs associated with aging:

- ▲ Depression
- ▲ Anxiety Disorders
- ▲ Dementia & Cognitive Decline
- ▲ Late-life Schizophrenia & Other Psychoses
- ▲ Adjustment Disorders & Grief
- ▲ Behavioral Issues Related to Medical Conditions

Memorial Physician Clinics

Senior Behavioral Health

(228) 575-1877 · fax **(228) 575-1192**

150 Reynoir Street | Biloxi, MS 39530



SLEEP MEDICINE

Sleep medicine is a medical specialty dedicated to helping those who have problems with sleeping or during sleep. Sleep disorders can include trouble falling or staying asleep, narcolepsy or sleeping too much, sleep apnea, restless legs syndrome, sleepwalking, and other abnormal sleep behaviors.



John Douglas, MD



**Heather
Buckheister, NP**



**Erica
Turan, NP**

Memorial Physician Clinics

Gulf Coast Pulmonary and Sleep Consultants

(228) 539-3356 · fax (228) 539-3318

9424 Three Rivers Road, Suite A | Gulfport, MS 39503



Diane Ross, MD

Memorial Physician Clinics

Neurology Pass Road

(228) 867-5277 · fax (228) 896-3314

749 Oakleigh Avenue | Gulfport, MS 39507



John Douglas, MD

Memorial Sleep Center Gulfport

(228) 822-6474 · fax (228) 822-6357

1118 Broad Avenue | Gulfport, MS 39501



Chelsea Grow, DO



Abha Mishra, MD

Memorial Sleep Center Stone County

(228) 206-0813 · fax (228) 265-5718

1434 East Central Avenue | Wiggins, MS 39577



UROLOGY

Urologists diagnose and treat diseases and disorders of the urinary tract and the male reproductive system. Conditions include:

- ▲ Prostate Cancer
- ▲ Kidney Stones
- ▲ Male Infertility
- ▲ Erectile Dysfunction
- ▲ Urinary Incontinence



Craig A. Dawkins, MD



Robert Gold, MD



P. Jason Shannon, MD



**Lacey
Lichtenstein, NP**



**Thomas
Meece, NP**

**Not pictured:
Richard Paddock, MD**

Memorial Physician Clinics

Coast Urology Center

(228) 575-1600 · fax (228) 575-1603

1340 Broad Avenue, Suite 210 | Gulfport, MS 39501

14213 Cook Road East, Building A | Biloxi, MS 39532

15286 Community Road | Gulfport, MS 39503

4300 Leisure Time Drive | Diamondhead, MS 39525

VASCULAR SURGERY

Vascular Surgeons provide care to patients with artery and vein disorders. Common vascular disorders include arterial problems, such as aneurysms and blocked arteries. Additional conditions treated include:

- ▲ Abdominal Aortic Aneurysm
- ▲ Carotid Artery Blockage
- ▲ Peripheral Artery Disease
- ▲ Varicose Veins
- ▲ Venous Insufficiency/DVT
- ▲ Renal/Mesenteric Blockage
- ▲ Hemodialysis Access



Andrea Barker, MD



Joseph Graham, DO



Haylie Reed, MD

Memorial Physician Clinics

Vascular Surgery Consultants

(228) 575-1300 · fax (228) 867-6423

1340 Broad Avenue, Suite 220 | Gulfport, MS 39501

WOUND CARE

Wound Care Specialists use hyperbaric oxygen therapy, negative pressure therapy, specialized dressings, compression dressings, minor debridements and total contact casting to treat acute, chronic and slow to heal wounds. Staff is on call for hyperbaric emergencies (including critical care patients).



Nathan Gill, DO



Brett Kathmann, MD



Jennifer Bickel, NP



Kimberly Dominique, NP



Krystal Sitthivong, NP

Memorial Physician Clinics

Wound Care
Hyperbaric Oxygen Therapy
(228) 867-4499 · fax (228) 867-5027

4500 Thirteenth Street | Gulfport, MS 39501

Memorial Stone County Wound Care

1434 East Central Avenue | Wiggins, MS 39577



HOSPITALS



Memorial Hospital Gulfport

4500 Thirteenth Street | Gulfport, MS 39501
(228) 867-5000



Memorial Hospital Biloxi

150 Reynoir Street | Biloxi, MS 39530
(228) 432-1571



Memorial Hospital Stone County

1434 E Central Avenue | Wiggins, MS 39577
(601) 928-6600



DIAGNOSTIC IMAGING



Memorial Hospital Gulfport

4500 Thirteenth Street

Medical Office Building

1340 Broad Ave., Suite 150

Diagnostic Imaging

(228) 867-4395

1.5 Tesla MRI - Open Bore MRI
Breast MRI
Computed Tomography (CT)
3D & 2D Digital Mammography
(with CAD)
DEXA (bone density)
Nuclear Medicine
Ultrasound • X-ray

Diagnostic Imaging

(228) 867-4395

PET/CT
Computed Tomography (CT)
Ultrasound
X-ray



Gulfport

4320 Fifteenth Street

Diagnostic Imaging

(228) 822-6899

MRI
X-Ray
Computed Tomography (CT)

Women's Diagnostics

(228) 867-4095

DEXA (Bone Density)
Mammography
Ultrasound



DIAGNOSTIC IMAGING



Diamondhead
45000 E. Aloha Drive

Laboratory

Diagnostic Imaging (228) 867-4395

Computed Tomography (CT) Digital
Mammography
DEXA (Bone Density)
Ultrasound
X-ray

Cardiovascular Diagnostic (228) 575-2400

Electrocardiography (EKG)
Echocardiography
Vascular Ultrasound

Neurodiagnostic Studies (228) 575-2400

Electroencephalography (EEG)
Electromyography (EMG)
Nerve Conduction Studies



Cedar Lake – Biloxi
1756 Popp's Ferry Road

Laboratory

Diagnostic Imaging (228) 867-4395

Computed Tomography (CT)
Digital Mammography
DEXA (Bone Density)
Ultrasound
X-ray

Cardiovascular Diagnostic (228) 575-2400

Electrocardiography (EKG) ·
Echocardiography
Vascular Ultrasound

Neurodiagnostic Studies (228) 575-2400

Electroencephalography (EEG)
Electromyography (EMG)
Nerve Conduction Studies

DIAGNOSTIC IMAGING



Acadian Plaza -Orange Grove

12261 Hwy 49N, Acadian Plaza, Ste. 12

Laboratory

Diagnostic Imaging

(228) 867-4395

Computed Tomography (CT)
Digital Mammography
DEXA (Bone Density)
Ultrasound • X-ray

Cardiovascular Diagnostic

(228) 575-2400

Electrocardiography (EKG)
Echocardiography
Vascular Ultrasound

Neurodiagnostic Studies

(228) 575-2400

Electroencephalography (EEG)
Electromyography (EMG)
Nerve Conduction Studies



Memorial Hospital Stone County

1434 E Central Avenue, Wiggins

Diagnostic Imaging

(228) 867-4395

Open Bore MRI | Computed Tomography (CT) | Ultrasound | X-ray



DIAGNOSTIC IMAGING



Memorial Hospital Biloxi
150 Reynoir Street

Diagnostic Imaging
(228) 436-1111

Computed Tomography (CT) | Digital Mammography | Nuclear Medicine
Ultrasound | X-ray • Fluoroscopy



Memorial Medical Office Suites
147 Reynoir Street, Suite 100

Diagnostic Imaging
(228) 867-4395

Digital X-ray



D'Iberville
3200 Mallett Road, Suite E-2

Diagnostic Imaging
(228) 314-7266

MRI
Computed Tomography (CT)
Ultrasound
Digital Mammography &
3D Tomography
X-ray • Fluoroscopy
DEXA (Bone Density)



Gulfport North
14245 Dedeaux Road

Diagnostic Imaging
(228) 314-7266

Open MRI
Computed Tomography (CT)
Ultrasound
Digital Mammography &
3D Tomography
X-ray • Fluoroscopy

SURGERY CENTERS

Memorial's patients receive support throughout all stages of inpatient and outpatient surgical care, from the first consultation to post-surgery and rehabilitation.



Memorial Hospital Gulfport
4500 Thirteenth Street, Gulfport MS 39501
(228) 867-4000



Memorial Hospital Biloxi
150 Reynoir Street | Biloxi, MS 39530
(228) 432-1571

SURGERY CENTERS



Memorial Surgery Center Cedar Lake

1720 B Medical Park Drive, Biloxi, MS 39532

(228) 822-6300



Memorial Surgery Center Ocean Springs

90 Industrial Park Circle, Ocean Springs, MS 39564

(228) 872-6290

INDEX

Adams, Casey NP.....	4
Adlahka, Sati DO	5
Albrecht, Dana NP.....	15, 50
Alexander, Belinda MD	37
Allen, Robin NP	4
Allen, Summer MD	35, 66
Anderson, Eric MD	53
Anthony, Brian MD	29
Anthony, Lisa NP	37
Aure, Lyn MD	33
Azar, Nabil MD.....	31
Baber, Lissa NP	56
Badve, Seema MD	37, 40
Bailey, John Marc PA.....	54
Ballew, Matthew DO	31
Barker, Andrea MD.....	71
Baroudi, Bassam R. MD	7
Bechtel, John MD.....	53
Begum, Mubeena MD	31, 39
Bell, Kami NP	34
Bender, Leslie MD.....	29
Benefield, Boyd MD.....	39
Bethala, Cyril V.K. MD.....	7
Bickel, Jennifer NP.....	72
Bishop, Julia PA	5
Black, Arthur D. MD	54
Blair, Jessica PA	3
Blalack, Virginia MD.....	40
Blomberg, C. Shane MD	15
Blythe, Patrick NP.....	6
Boles, Nathan MD	31, 46, 61
Bondio, Nicholas DO	16
Borchelt, Mark MD	12
Borho, Andrew PA.....	54
Bosarge, Joseph MD	35
Boyd, Holly NP	62
Brackett, Blakley NP	4
Brockler, Kristin PA.....	8
Brooks, George DO	21
Brosh, Tiffany NP.....	7
Brown, LuAn NP.....	26
Brown, Samuel MD	29
Bruister, Katherine PA.....	7
Bruni, Timothy MD.....	62

Bruno, Jonathan MD.....	29
Buckheister, Dave NP.....	7
Buckheister, Heather NP	65, 69
Buckley, Jennifer	35
Burdick, Travis DPT.....	57
Burns, Robert MD	60
Burwell Jr., Dudley MD.....	54
Burwell, Joel DO.....	19
Burwell, Lisa NP.....	30
Busby, Brandi NP.....	35
Bush-Coaxum, Sharon MD.....	33
Butt, Shera NP.....	35
Buzhardt, Mary SLP.....	57
Byrd, Kenneth MD	32
Campbell, Madelena NP.....	2
Carlson, Matthew MD.....	31
Carter, Kristine MD	29
Cartilage, Andrew COTA.....	57
Case, Theresa DO.....	35, 66
Caswell, Brian NP.....	55
Caswell, Ellen, MD.....	13
Caswell, Jason PA	54
Cathey, Gene MD	15, 20
Cathey, Linda Rene NP	15
Cawlfild, Robin NP	32
Champagne, Jennifer NP.....	36
Chance, Rickey DO.....	15, 50
Clark, Anna PA	29
Clark, Tori Wilson MD	47
Clay, Ayana NP.....	32
Cobb, Kelsey NP.....	36
Coleman, Brittany NP	38
Coleman, Elizabeth NP	4
Colley, B. Judson III, MD, MPH.....	3
Compton, Phillip MD.....	31, 39, 46
Conger, Nicholas MD.....	34
Coolidge, Jessica NP	41
Cowan, Kelly NP	54
Cowart, Dasha DO	31
Cox, Mariah NP	4
Craig, Emma MD.....	31
Crittenden, James MD	36
Crittenden, William MD	31
Crowder, Rowe III, MD.....	37

Cuevas, Holly NP.....	15, 50
Cullinane, Jr., William ‘Russ’ DO	35
Cuzzi, Mario III DO.....	31
Dahlberg, Benjamin DO.....	31
Dauro, Angela PA	10
Davis, Cliff PA	55
Davis, David PT.....	57
Davis, Marly NP.....	46
Dawkins, Craig A. MD	70
Dawkins, Paulette NP.....	46
Dean, Malcolm MD.....	31
Dean-Reaves, Ashley NP	48
Deans, Amanda MD.....	31
Dedeaux, Tamika NP	14, 50
DeLoach II, Jared NP.....	19
Denius, Mary Edye NP	52
Dickson-Rishel, Dorothy PhD	59
Dillon, Alva MD.....	26
Dimitriades, Jimmy MD	20
Douglas, John MD.....	65, 69
Dominique, Kimberly NP	72
Drouilhet, Rachel MD	48
Duet, Ally PA	49
Dumal, Katherine NP	32
Duncombe, Vanessa MD.....	18
Dunn, Kristina NP	44
Duplantier, Noel MD	33, 49
Dykes, Matthew PA.....	26
Edmiston, Bart MD	59
Edrington, Diane NP	20
Edupuganti, Hema MD.....	31
Ellsberry, Alicia NP	46
Erwin, Bill MD.....	31
Esser, Kimberly NP	21
Evans, Traci NP	12
Everhart, Brittany NP	32
Fagbongbe, Eniola MD	33
Fairbrother, Erin MD.....	33
Farmer, Jerilyn NP	8
Farris, Afton OT.....	57
Felker, Kaylan NP.....	6
Finlay, Darrell, MD	27
Folse, Susi MD	58
Ford, Grace NP	18
Fore, Deborah NP	26
Fore, Hannah NP	46
Fratesi, Garret DO	16

Fratti, Juan Del Cid MD.....	8
Fussell, Stephanie MD	51
Gaddy, Donald MD.....	48
Gaddy, James MD	33
Gaddy, Kathrine NP	48
Gatlin, Matt NP	33
Gelman, Vadim MD	33
Ghaffari, Bitra MD	16
Gibson, Brian NP	4
Gibson, Kimberly NP.....	24
Gill, Nathan DO	72
Gioe, Scott MD.....	28
Glidden, Brandi PTA	57
Gold, Robert MD	70
Goodfellow, Keith MD	49
Grady, John MD	31, 46
Graham, Joseph DO	71
Grow, Chelsea DO	42, 69
Grzyb, Stevi NP	6
Gupta, Richa MD.....	67
Gwin, Hanna, MD, PharmD	40
Hager, Heather NP.....	55
Hamid, Sarah MD	30
Hand, Karen MD	54
Handy, Chalonda MD	31
Hardwick, James MD.....	7
Harris, Rebecca NP.....	25
Harris, Robert MD.....	30
Head, Amy NP.....	56
Helsel, Tessa DO	14
Heritage, Stephanie NP	35
Hicks, Brittany NP.....	51
Hiebert, Timothy MD	31
Hightower, Olivia MD.....	51
Hill, Amanda NP.....	28
Hoda, Danielle NP.....	5
Holcomb, Addie NP.....	51
Holland, James MD.....	2
House, Ashley NP	12
Hudson, Gracia NP.....	26
Hudson, Robyn NP.....	17
Hughley-Emergara, Ann MD	31
Hunt, Lauren NP	46
Hunter, Jennifer NP.....	21
Hussey, Alyse NP	48
Ilercil, Orhan MD.....	44

Isikalu, Olusola MD	35
Iverson, Kyle MD	29
Jackson, Alchar NP	22
Jakins, Diane NP.....	32
Jalal, Shwan MD	8
Jeffrey, Healthier NP.....	30
Jernigan, Grant DO	31
Johns, Stephen MD	46
Jones, Jonathan MD.....	33, 47
Kathmann, Brett MD	72
Keimig, Kathy MD	24
Kelly, Steven NP.....	35
Kennon, Kristi PA	19
Kerby, Barbara NP	21
Kerby, Sean C. MD	21
Kessler, Isabel PA	42
Khalid, Sidra MD	52
Kijonka, Erin NP	32
Kim, Cathy NP.....	12
King, Trimiya NP.....	8
Kioseff, Dona MD.....	48
Kittrell, Kerri NP	53
Knutson, Stacy PA	54
Kommineni, Krishna MD	67
Koskan, Irene MD	36
Kotti, George MD.....	35
Kreher, Stacey WHNP.....	49
Krentel, Rod MD.....	53
Kulpa, Janus MD.....	22
Ladd, Chaeleena NP.....	66
Ladner, Amber NP	42
Landis, Hope NP.....	61
Landrum, Marissa PTA	57
Landry, Blake MD	33
LaRosa, David MD.....	40
Latack, Wayne MD	40
Lasseter, Rachel NP	6
Le, Kim NP.....	32
Leatherman, Bryan MD	11
Leatherwood, Lynn MD.....	39
Lee, John DO.....	20, 23
Lee, Rebecca MD	29
Leggett, Shayna NP	4
Lenox, Valerie MD	37
Lett, Erika, NP	15, 50
Libys, Jay MD	4
Lichtenstein, Lacey NP	70

Liddell, Marshea NP.....	26
Liner, Zachary MD	45
Lipski, Danielle OT	51
Littlepage, Debra OT	57
Long, Raymond MD	56
Love-Grove, Nichole DO	31
Lozano, Marc MD.....	13
Maalouf, Mousa MD	40
Mace, T. Paul MD	30
Maddox, Brian DO.....	20, 23
Magee, Rachel NP.....	4
Malik, Umair MD	8
Mallett, John MD.....	49
Manns, Melantha MD.....	31
Martin, Jessie DO	31
Mathews, Lezlie NP	4
Matthews, Sandra NP.....	18
Mattina, Jane NP	54
Mayfield, Aimee NP	62
McCool, Haley MD	47
McCreight, Kelli NP	32
McDaniel, Alicia NP.....	44
McDaniel, Savannah NP	8
McDougal, Cynthia NP.....	61
McGill, Samantha NP	12
McKay, Michael MD.....	33
McKee, John III, MD	26
McKee-McKinney, Jennie NP	32
McIntosh, David PT, OCS	57
McLemore, Adrian NP	37
McMullan, Richard NP	8
McNair, Alfred MD	26
McNeese, J. "Trippe" MD	27
Meece, Teresa NP	16
Meece, Thomas NP	70
Middleton, Charles "Hunter" NP.....	3
Mihnovets, Jonathan DO.....	31
Mikhail, Magdy MD	37, 48
Miller, Amanda NP.....	41
Miller, Toni NP.....	32
Mimbs, Latricia LPTA	57
Minor, Myesha NP	4
Mishra, Abha MD	42, 69
Mishra-Nicaud, Vibha MD	51
Mitchell, Jessica NP	32
Mitchell, Kaniেশia NP.....	32
Mitchell, Shawna NP.....	14, 50

Moore, Billy NP.....	12, 22, 23
Moore, Trenita NP	32
Moore, Whitney NP	24
Morris, Dave NP.....	32
Morris, Jamie NP	28
Muirhead, Melissa MD.....	31
Muirhead, Ricky NP.....	32, 46
Mullen, Paul MD.....	4
Murphy, Joanie NP	32, 61
Murray, Leanne FNP-C, CLC	49
Murray, Matthew 'Jack' MD	38
Musgrove, Anne NP.....	17
Muzslay, Susan RDN, LDN	26
Narcisse, Adela' MD	32
Neal, Jackie NP.....	8
Nguyen, Ian MD	33
Nguyen, Stephanie NP.....	8
Nobles, James, MD.....	29
Northington, David DO	31
Nuschke, Rachael NP.....	36
Paddock, Richard MD.....	70
Pakron, Fred MD.....	65
Palmer, Takiffany DNP	26
Pande, P.V., MD	52
Pappas, John F. MD	47
Parker, Greg NP	39
Parker, Renita DPM	64
Passarelli, William, III.....	8
Patel, Indrajit MD	31
Payment, Michael MD	5
Payne, Kim NP.....	32
Pendowski, Candace NP.....	32
Peterson, Andrew DO	40
Pham, Hanh NP.....	65
Pickich, Elora SLP.....	57
Pressley-Wallace, Angela MD	26
Preyear, Phylengthia FNP-C	8
Purvis, Darlene NP	39
Putnam, Tricia NP	54
Quave, Lauren NP.....	34
Quinn-Magee, Tiffany NP.....	19
Raff, John MD	56
Ramsey, Stacie NP	17, 20
Randall, Glynnis NP.....	21
Rao, Hari MD.....	31
Rayborn, Kimberly NP	17, 25

Reed, Ann NP	16
Reed, Haylie MD.....	71
Reeves, David MD.....	62
Reich, Shawna NP	37
Richardson, Dana NP	33
Ridenhour, April PA	42
Riggs, Ambere' NP.....	8
Riley Endt, Jamie NP.....	8
Rimmer III, Trey MD.....	29
Rizk, Antoine MD	4
Roberts, David MD	21
Robinson-Comer, Maria NP.....	35
Robinson, Tim NP	35
Rogers, Laura NP.....	28
Rose, Rebecca MD.....	15, 20
Ross, Diane MD.....	43, 69
Roussel, Jordan MD.....	27
Rupp, Cristina NP	22
Sampong, Claudia DO.....	48
Samuel, Kendra NP.....	46
Sanders, Tiffany NP	9
Sanford, Laura DO	24
Sangani, Bharat MD.....	6, 39
Schepens, Steven MD.....	17, 20
Schlosser, Charles MD	60
Segarra, Jay MD	65
Shafique, Hassan MD.....	31
Shah, Manoj MD	6
Shahin, George MD	52
Shannon, P. Jason MD	70
Simmons Yang, Erica WHNP	47
Simpson, Amy NP.....	40
Sitthivong, Krystal NP.....	72
Skaggs, Ashley NP.....	36
Skelton, T. Benjamin MD.....	38, 40
Slawson, Lisa NP	59
Smith, Benjamin MD	31
Smith, Elizabeth 'Liz' PNP.....	63
Smith, Grace MD.....	31
Smith, Thomas MD.....	54
Speaker, Katherine NP	55
Spear, Kristian NP.....	4
Stanford, Onellis NP	40, 55
Stanich, Charles MD	31, 46
Stegall, Jacinta NP	11
Sterling, Amanda WHNP-BC.....	47

Stevens, Laura NP	66
Stewart, Michelle NP	4
Stokes, Bailey PA-C	51
Stonington, Michael MD	55
Stovall, Patrick DO	31
Stringer, Shauna NP	32
Stroz, Brendan PA	55
Subedi, Rogin MD	8
Summerlin, Holly MD	33
Surowiec, Walter DO	9
Symmes, Mary Beth NP	54
Tamboli, Kaizad MD	38
Tanner, Alexandria NP	27
Tanner, Tony NP	23
Tarver, Amber NP	32
Tasan, Ediz MD	8
Tasan, Laura MD	67
Tayara, Wakkas MD	5
Taylor, David MD	48
Taylor, Nescaterica NP	17
Thames, John, DO	25
Thibodeaux, Abby NP	8
Thomasson, James 'Dave' Jr., MD	45
Thompson, Ashley NP	17
Tomajian, Aline NP	59
Tomajian, Samir MD	59
Tran, Vivian NP	8
Tuli, Pamela MD	52
Tullos, Bobby MD	35, 66
Turan, Erica NP	22, 65, 69
Turan, Tony NP	5
Tyler, Joshua MD	10
Valderrama, C. Marcella MD	20
Vandevender, Kelsi LPTA	57
Venatta, Emily NP	35
Vinson, Jared DO	31
Voulters, Lee MD	42
Vu, Johnathan MD	31
Wagner, Heather NP	32
Wakham Bennett, Brenda NP	34

Wall, Allison MD	51
Wallace, Ciji FNP	19
Ward, George MD	22
Ware, Alisha H. MD	47
Ware, Derek MD	29
Warren, Leah NP	49
Warren, Stefanie NP	46
Watson, Benjamin MD	10
Watts, Joel MD	31
Waxman, Erna MD	33
Webster, Travis MD	15, 20
Wells-Wonsley, Christine NP	23
Westbrook, Christen "Reed" NP	8
Westbrook, Howard "Bud" MD	25, 55
Wheeler, Robyn NP	32
White, Steven DPT	57
White, Tara NP	6
Whitman, Nicole NP	15
Wiley, Dandria NP	22
Wilkinson, Natalie NP	4
Williams, Doug MD	39
Williams, Karen Keel AUD	11
Williams, Schaquwa NP	32
Wilson, Naomi NP	7
Windham, Chelsey NP	24
Wolfson, Eric MD	44
Wright Taylor, Michelle NP	66
Wurm, William 'Van' MD	63
Yang, Erica Simmons WHNP-BC	46
Youngblood, Gaela PsyD	52
Zayed, Mahmoud MD	8



Updated 3/05/26